



**CST**®

BICYCLE TIRES GLOBAL

2023/2024





# CONTENTS

## 4 **Technical Specifications**

All technical details explained.

## 6 **City/Commuter**

Bicycle tires for the daily routine.

## 20 **Fat Tire**

Fun and practical – tires for the newest trend in cycling.

## 24 **Road**

Road tires for leisure, training or serious competition – CST has it all.

## 34 **Cyclocross**

Capable of handling all conditions.

## 38 **Gravel/Dirt**

Built to handle the everchanging conditions.

## 44 **Mountain**

Hardpack, loose or dirt – CST has the right tread patterns.

## 60 **BMX**

Tires for the track, street or park.

## 66 **Inner Tubes**

Standard, superlight, downhill, self-sealing or thorn resistant tubes.

### **City/Commuter**

Wattsup Dynamic | Wattsup Allround | Preston | Cosmo | Platinum-E | Brooklyn | Xpedium | E-Series Pro | Future | Ciudad | Sensamo Speed | Platinum Performance | Studmuffin | Classic Breaker | Metropolitan Palmbay | Sensamo Sumo | Sensamo Master | Venice

### **Fat Tire**

Scout | Tourance

### **Road**

Sprint | Energia | Circuit | Correre | Cito | Stradale | Recourse | Conquistare | Czar | Caldera

### **Cyclocross**

Crisscross | Cultivator

### **Gravel/Dirt**

Overton | Pika | Detour | Convoy | Tirent

### **Mountain**

Gravateer | Mudlock | B-Trail | Toboggan | Dirt Fiend | Heathen | Ouster | Patrol | Jack Rabbit | Jack Rabbit II | BFT | Studmuffin MTB | Rock Hawk | Trail Fiend | Voyager | Roly Poly | Serratus | Stayer | Gripper | Beater | Camber | Critter

### **BMX**

Vault | Decade | Operative | Tracer



# ANTI-PUNCTURE LEVELS

1



**Level 1:** A layer of rubber is added between the tread portion and the carcass ply to increase puncture protection and serve as a wear indicator.



2



**Level 2:** AI: A layer of rubber is added between the tread portion and the carcass ply. This stab-proof layer contains "dipped short fibres" to provide good stab-proof performance.

FI: A layer of rubber is added between the tread portion and the carcass ply. The anti-stab rubber is a strengthened combination of high-strength rubber and high-strength chemical fibres.



3



**Level 3:** Lightweight and cut-resistant mesh interwoven fabric allows tires to provide good puncture resistance without adding excessive weight, reducing the risk of punctures.



4



**Level 4:** The same as Defender Cobweb, with additional bead to bead protection



5



**Level 5:** A 3.0mm thick elastic layer comprising special high-resilience rubber. When encountering puncture, the foreign body is discharged to avoid further puncture damage.



6



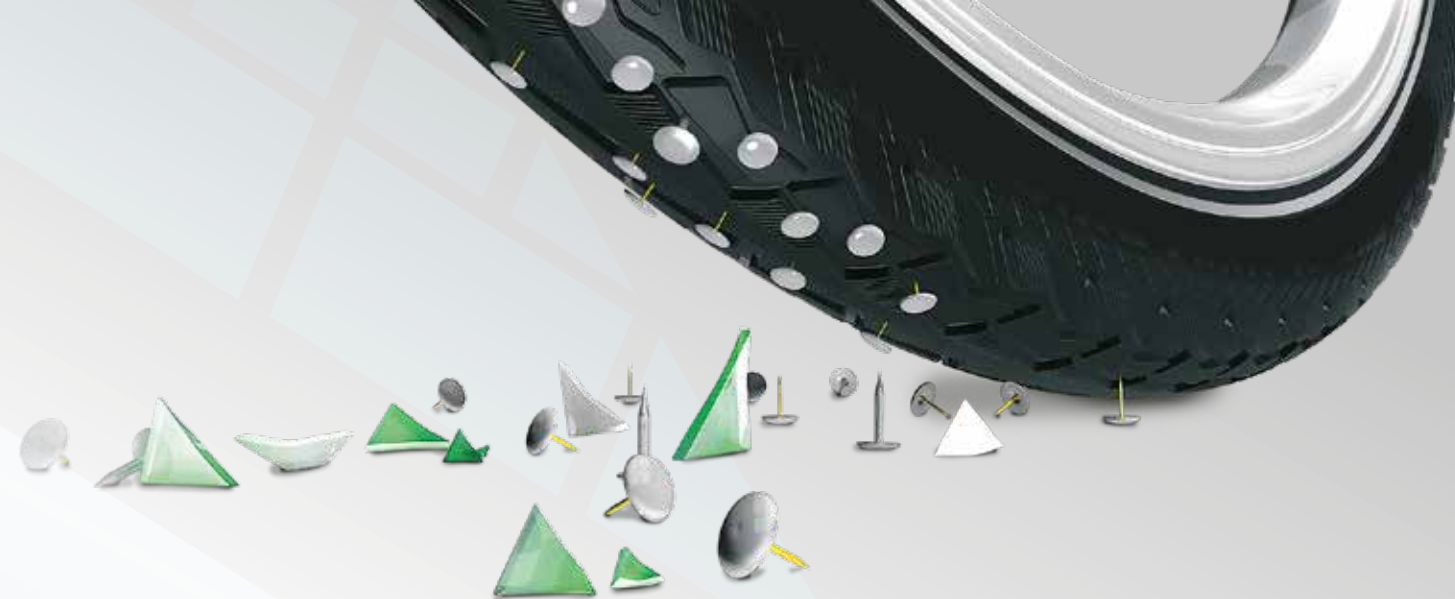
**Level 6:** The double combined protective layer, which combines the advantages of Defender Rebound3 and Defender Cobweb, and greatly improves the puncture resistance of the tire.



7



**Level 7:** A 5.0mm thick elastic layer comprising special high-resilience rubber. When encountering puncture, the foreign body is discharged to avoid further puncture damage.





The CST logo is located in the top right corner. It consists of the letters "CST" in a bold, white, sans-serif font, with a registered trademark symbol (®) to the right. The logo is set against a red parallelogram background.

**CST**®

A person with short blonde hair, seen from behind, is standing next to a yellow bicycle. They are wearing a dark jacket with a patterned backpack. The background is a sunset over a body of water, with a geometric overlay of yellow and blue shapes.

## CITY/COMMUTER

For the daily commute / For long distances or short rides





NEW

## WATTSUP DYNAMIC

CTC-07

The Wattsup Dynamic tire is the ultimate puncture protection tire designed for e-bikes with a maximum speed of 50km/h. Whether you're embarking on extended bike tours or simply commuting to work, this tire offers unparalleled protection against damage and flat tires. It combines two highly effective puncture protection materials, ensuring optimal safeguarding.



| ITEM | INCH             | ETRTO  | FRENCH SIZE | TPI | BEAD | WEIGHT (g) | COMPOUND | MAX PSI | TECH                                   | COLOUR |
|------|------------------|--------|-------------|-----|------|------------|----------|---------|--|--------|
|      | 26X1.75          | 47-559 |             | 27  | Wire | 945        | Single   | 75      | Defender Rebound 3mm                   | Black  |
|      | 26X1.75          | 47-559 |             | 60  | Wire | 915        | Single   | 75      | Defender Rebound 3mm + Defender Cobweb | Black  |
|      | 28X1 5/8 X 1 3/8 | 37-622 |             | 27  | Wire | 835        | Single   | 75      | Defender Rebound 3mm                   | Black  |
|      | 28X1 5/8 X 1 3/8 | 37-622 |             | 60  | Wire | 770        | Single   | 75      | Defender Rebound 3mm + Defender Cobweb | Black  |
|      | 28X1.50          | 40-622 | 700X38C     | 27  | Wire | 870        | Single   | 75      | Defender Rebound 3mm                   | Black  |
|      | 28X1.50          | 40-622 | 700X38C     | 60  | Wire | 845        | Single   | 75      | Defender Rebound 3mm + Defender Cobweb | Black  |
|      | 28X1.75X2        | 47-622 |             | 27  | Wire | 1075       | Single   | 75      | Defender Rebound 3mm                   | Black  |
|      | 28X1.75X2        | 47-622 |             | 60  | Wire | 1040       | Single   | 75      | Defender Rebound 3mm + Defender Cobweb | Black  |
|      | 28X2.00          | 50-622 |             | 60  | Wire | 1100       | Single   | 65      | Defender Rebound 3mm + Defender Cobweb | Black  |



NEW

## WATTSUP ALLROUND

CTC-01

For e-bikes up to 50km/h, the Wattsup Advance tire is the epitome of puncture protection, perfect for both extensive bike tours and daily commutes. This tire combines two cutting-edge puncture protection technologies to deliver exceptional defence against damage and flat tires. The rubber protection belt expertly redirects sharp objects, preventing them from piercing the tube and causing punctures. With its reinforced carcass boasting 60 TPI (Threads Per Inch), the Wattsup Advance tire not only enhances balance but also stabilises the extra-thick protection belt.



| ITEM | INCH             | ETRTO  | FRENCH SIZE | TPI | BEAD | WEIGHT (g) | COMPOUND | MAX PSI | TECH                                   | COLOUR |
|------|------------------|--------|-------------|-----|------|------------|----------|---------|--|--------|
|      | 26X1.75          | 47-559 |             | 27  | Wire | 990        | Single   | 65      | Defender Rebound 3mm                   | Black  |
|      | 26X1.75          | 47-559 |             | 60  | Wire | 960        | Single   | 65      | Defender Rebound 3mm + Defender Cobweb | Black  |
|      | 28X1 5/8 X 1 3/8 | 37-622 |             | 27  | Wire | 820        | Single   | 75      | Defender Rebound 3mm                   | Black  |
|      | 28X1 5/8 X 1 3/8 | 37-622 |             | 60  | Wire | 800        | Single   | 75      | Defender Rebound 3mm + Defender Cobweb | Black  |
|      | 28X1.50          | 40-622 | 700X38C     | 27  | Wire | 870        | Single   | 75      | Defender Rebound 3mm                   | Black  |
|      | 28X1.50          | 40-622 | 700X38C     | 60  | Wire | 845        | Single   | 75      | Defender Rebound 3mm + Defender Cobweb | Black  |



## NEW PRESTON CTC-21

Conquer urban cobblestones and forest paths effortlessly with the Preston eSUV tire. Designed to take you anywhere you desire, this tire is your reliable companion, available seven days a week. With its versatile nature, the Preston eSUV tire reigns as the ultimate king of all roads, offering a smooth and seamless ride both on and off the beaten path. No matter where your adventure leads, trust in the Preston tire to provide you with unmatched performance, ensuring every journey is a joyous and comfortable experience.



| ITEM       | INCH      | ETRTO  | FRENCH SIZE | TPI | BEAD | WEIGHT (g) | COMPOUND | MAX PSI | TECH            | COLOUR |
|------------|-----------|--------|-------------|-----|------|------------|----------|---------|-----------------|--------|
| TB00481300 | 27.5X2.35 | 60-584 |             | 27  | Wire | 1310       | Dual     | 65      | Defender Cobweb | Black  |
| TB00481400 | 29X2.35   | 60-622 |             | 27  | Wire | 1365       | Dual     | 65      | Defender Cobweb | Black  |

## NEW COSMO CTC-22

Experience the joy of biking through your beloved city with the Cosmo tire, designed to provide a smooth and comfortable ride with exceptional stability. This tire features an intelligent tread pattern, meticulously crafted to deliver optimal control even in the most demanding urban environments. Whether you're navigating busy streets or tackling challenging terrains, the Cosmo tire's thoughtful design ensures you can confidently handle any situation.



| ITEM       | INCH      | ETRTO  | FRENCH SIZE | TPI | BEAD | WEIGHT (g) | COMPOUND | MAX PSI | TECH            | COLOUR |
|------------|-----------|--------|-------------|-----|------|------------|----------|---------|-----------------|--------|
| TB00484400 | 27.5X2.45 | 62-584 |             | 27  | Wire | 1280       | Single   | 65      | Defender Cobweb | Black  |
| TB00484300 |           | 62-622 | 700X62C     | 27  | Wire | 1335       | Single   | 65      | Defender Cobweb | Black  |

## NEW PLATINUM E CTC-17

Expand your horizons beyond the city center with the Platinum-E tire. Designed to excel on various urban surfaces, this rigid tire offers exceptional handling capabilities. Building upon the success of its non-electric counterpart, the Platinum Protector, which was crowned as the best buy in a 2021 edition of a renowned German Magazine, we have now developed a successor specifically tailored for e-bikes.



| ITEM       | INCH      | ETRTO  | FRENCH SIZE | TPI | BEAD | WEIGHT (g) | COMPOUND | MAX PSI | TECH            | COLOUR |
|------------|-----------|--------|-------------|-----|------|------------|----------|---------|-----------------|--------|
| TB00483000 | 28X1.60   | 42-622 | 700X40C     | 27  | Wire | 795        | Single   | 75      | Defender Cobweb | Black  |
| TB00462600 | 28X1.75X2 | 47-622 |             | 27  | Wire | 820        | Single   | 75      | Defender Cobweb | Black  |
| TB00455300 | 28X2.00   | 50-622 |             | 27  | Wire | 1020       | Single   | 65      | Defender Cobweb | Black  |
| TB00455400 | 28X2.15   | 55-622 |             | 27  | Wire | 1130       | Single   | 65      | Defender Cobweb | Black  |

## BROOKLYN C1996

Your cargo bike is a real workhorse. You need to deliver the load quickly – but you want to do it in reasonable comfort too. Our urban tire, the Brooklyn, is the perfect tire for cargo bikes. The thick anti-puncture layer, the stiffened sidewalls and the ideal natural suspension characteristics mean that you're still fit at the end of a long workday.



| ITEM       | INCH       | ETRTO  | FRENCH SIZE | TPI | BEAD | WEIGHT (g) | COMPOUND | MAX PSI | TECH                 | COLOUR |
|------------|------------|--------|-------------|-----|------|------------|----------|---------|----------------------|--------|
| TB00369900 | 20X2.15    | 55-406 |             | 60  | Wire | 730        | Single   | 65      | Defender Cobweb HL15 | Black  |
| TB00384400 | 20X2.15    | 55-406 |             | 60  | Wire | 865        | Single   | 65      | Defender Cobweb HL20 | Black  |
| TB00370000 | 26X2.15    | 55-559 |             | 60  | Wire | 1095       | Single   | 65      | Defender Cobweb HL15 | Black  |
| TB00384500 | 26X2.15    | 55-559 |             | 60  | Wire | 1245       | Single   | 65      | Defender Cobweb HL20 | Black  |
| TB00370100 | 26X2.40    | 60-559 |             | 60  | Wire | 1155       | Single   | 65      | Defender Cobweb HL15 | Black  |
| TB00384600 | 26X2.40    | 60-559 |             | 60  | Wire | 1305       | Single   | 65      | Defender Cobweb HL20 | Black  |
| TB00051700 | 27.5 X2.00 | 50-584 |             | 27  | Wire | 975        | Single   | 65      | Defender Allround    | Black  |
| TB00107800 | 28X1.50    | 40-622 | 700X38C     | 30  | Wire | 865        | Single   | 75      | Defender Rebound 3mm | Black  |
| TB00051800 | 29 X2.00   | 50-622 |             | 27  | Wire | 1025       | Single   | 65      | Defender Allround    | Black  |





# XPEDIUM C1880 XPEDIUM

The CST Xpedium line has options for every commuting preference, with a wide range of puncture protections, compound types and sizes available. The versatile Xpedium tread pattern provides dependable, predictable traction in a variety of conditions. The Xpedium One is built to take riders to work or on a relaxing bike ride – without punctures and without overloading your budget. Available with 27 TPI and our Defender Safe puncture protection, the Xpedium One is sure to get you to your destination again and again.



| ITEM       | INCH             | ETRTO  | FRENCH SIZE | TPI | BEAD     | WEIGHT (g) | COMPOUND | MAX PSI | TECH                            | COLOUR |
|------------|------------------|--------|-------------|-----|----------|------------|----------|---------|---------------------------------|--------|
| TB65689000 | 26X1.75          | 47-559 |             | 27  | Wire     | 850        | Single   | 75      | Defender Safe                   | Black  |
| TB65689100 | 26X1.75          | 47-559 |             | 32  | Wire     | 1075       | Single   | 75      | Defender Rebound 3mm            | Black  |
| TB65689200 | 26X1.75          | 47-559 |             | 60  | Wire     | 735        | Single   | 75      | Defender Cobweb                 | Black  |
| TB65689300 | 26X1.75          | 47-559 |             | 60  | Wire     | 780        | Single   | 75      | Defender Cobweb + Defender Safe | Black  |
| TB65689500 | 26X1.75          | 47-559 |             | 60  | Foldable | 715        | Dual     | 75      | EPSBTB                          | Black  |
| TB86601100 | 28X1.00          | 25-622 | 700X25C     | 60  | Wire     | 630        | Single   | 115     | Defender Rebound                | Black  |
| TB87238300 | 28X1*5/8X1*1/8   | 28-622 |             | 20  | Wire     | 560        | Single   | 100     | Defender Safe                   | Black  |
| TB87238200 | 28X1*5/8X1*1/8   | 28-622 |             | 27  | Wire     | 550        | Single   | 100     | Defender Safe                   | Black  |
| TB87238100 | 28X1*5/8X1*1/8   | 28-622 |             | 60  | Wire     | 690        | Single   | 100     | Defender Rebound                | Black  |
| TB89358300 | 28X1*5/8*1*1/4   | 32-622 |             | 20  | Wire     | 625        | Single   | 75      | Defender Safe                   | Black  |
| TB89358200 | 28X1*5/8*1*1/4   | 32-622 |             | 27  | Wire     | 580        | Single   | 75      | Defender Safe                   | Black  |
| TB89358600 | 28X1*5/8*1*1/4   | 32-622 |             | 27  | Wire     | 595        | Single   | 75      | Defender Cobweb                 | Black  |
| TB89358100 | 28X1*5/8*1*1/4   | 32-622 |             | 60  | Wire     | 780        | Single   | 75      | Defender Rebound                | Black  |
| TB90588400 | 28X1 5/8 X 1 3/8 | 37-622 | 700X35C     | 27  | Wire     | 700        | Single   | 75      | Defender Safe                   | Black  |
| TB90588100 | 28X1 5/8 X 1 3/8 | 37-622 | 700X35C     | 32  | Wire     | 805        | Single   | 75      | Defender Rebound 3mm            | Black  |
| TB90588200 | 28X1 5/8 X 1 3/8 | 37-622 | 700X35C     | 60  | Wire     | 640        | Single   | 75      | Defender Cobweb                 | Black  |
| TB90588300 | 28X1 5/8 X 1 3/8 | 37-622 | 700X35C     | 60  | Wire     | 640        | Single   | 75      | Defender Cobweb + Defender Safe | Black  |

| ITEM       | INCH             | ETRTO  | FRENCH SIZE | TPI | BEAD     | WEIGHT (g) | COMPOUND | MAX PSI | TECH                                   | COLOUR |
|------------|------------------|--------|-------------|-----|----------|------------|----------|---------|--|--------|
| TB00150700 | 28X1 5/8 X 1 3/8 | 37-622 | 700X35C     | 60  | Wire     | 795        | Single   | 75      | Defender Rebound 3mm + Defender Cobweb | Black  |
| TB90588900 | 28X1 5/8 X 1 3/8 | 37-622 | 700X35C     | 60  | Foldable | 620        | Dual     | 75      | Defender Allround                      | Black  |
| TB93962300 | 28X1.50          | 40-622 | 700x38C     | 27  | Wire     | 735        | Single   | 75      | Defender Safe                          | Black  |
| TB93962200 | 28X1.50          | 40-622 | 700x38C     | 32  | Wire     | 820        | Single   | 75      | Defender Rebound 3mm                   | Black  |
| TB93962000 | 28X1.50          | 40-622 | 700x38C     | 60  | Wire     | 640        | Single   | 75      | Defender Cobweb                        | Black  |
| TB93962100 | 28X1.50          | 40-622 | 700x38C     | 60  | Wire     | 715        | Single   | 75      | Defender Cobweb + Defender Safe        | Black  |
| TB93962500 | 28X1.50          | 40-622 | 700x38C     | 60  | Foldable | 625        | Dual     | 75      | Defender Allround                      | Black  |
| TB95240000 | 28X1.75X2        | 47-622 | 700X45C     | 27  | Wire     | 900        | Single   | 75      | Defender Safe                          | Black  |
| TB95240100 | 28X1.75X2        | 47-622 | 700X45C     | 32  | Wire     | 1020       | Single   | 75      | Defender Rebound 3mm                   | Black  |
| TB95240200 | 28X1.75X2        | 47-622 | 700X45C     | 60  | Wire     | 855        | Single   | 75      | Defender Cobweb                        | Black  |
| TB95240300 | 28X1.75X2        | 47-622 | 700X45C     | 60  | Wire     | 820        | Single   | 75      | Defender Cobweb + Defender Safe        | Black  |
| TB95240400 | 28X1.75X2        | 47-622 | 700X45C     | 60  | Foldable | 810        | Dual     | 75      | Defender Allround                      | Black  |
| TB92287200 | 28X1*1/2         | 40-635 |             | 20  | Wire     | 825        | Single   | 75      | Defender Safe                          | Black  |
| TB92287000 | 28X1*1/2         | 40-635 |             | 27  | Wire     | 770        | Single   | 75      | Defender Safe                          | Black  |
| TB92287100 | 28X1*1/2         | 40-635 |             | 30  | Wire     | 875        | Single   | 75      | Defender Rebound 3mm                   | Black  |
| TB92287300 | 28X1*1/2         | 40-635 |             | 60  | Wire     | 870        | Single   | 75      | Defender Rebound                       | Black  |



# E-SERIES PRO C1919

The most simple version of CST tires is so well made that they can be assembled on an e-bike up to 25 km/hour. However, there are increasingly more bicycles with pedal assistance that can go faster than 25 km/hour and for those bicycles the tires have to be specially approved. With the arrival of the CST E-series Protector, CST has set a new standard for e-bike tires. The carcass is extremely robust and the compound is specially made to generate less rolling resistance. Add to that the fast pattern and double breaker layer and this can justifiably be called a top-class product.



| ITEM       | INCH             | ETRTO  | FRENCH SIZE | TPI | BEAD | WEIGHT (g) | COMPOUND | MAX PSI | TECH              | COLOUR |
|------------|------------------|--------|-------------|-----|------|------------|----------|---------|-------------------|--------|
| TB90609000 | 28X1 5/8 X 1 3/8 | 37-622 | 700X35C     | 60  | Wire | 640        | Single   | 75      | Defender Ultimate | Black  |
| TB97715000 | 28X1.50          | 40-622 | 700X38C     | 60  | Wire | 710        | Single   | 75      | Defender Ultimate | Black  |

# FUTURE C1966

A combination of functionality and speed. The CST Future offers a fast pattern with optimal grip for more than one particular surface. With an ECE approval for 25km/h the CST Future is very convenient for the E-bike rider facing multiple conditions.



| ITEM | INCH             | ETRTO  | FRENCH SIZE | TPI | BEAD | WEIGHT (g) | COMPOUND | MAX PSI | TECH          | COLOUR |
|------|------------------|--------|-------------|-----|------|------------|----------|---------|---------------|--------|
| TBA  | 26X1.75          | 47-559 |             | 22  | Wire | 815        | Single   | 65      | Defender Safe | Black  |
| TBA  | 28X1 5/8 X 1 3/8 | 37-622 | 700X35C     | 22  | Wire | 675        | Single   | 75      | Defender Safe | Black  |
| TBA  | 28X1.50          | 40-622 | 700X38C     | 22  | Wire | 715        | Single   | 75      | Defender Safe | Black  |
| TBA  | 28X1.75X2        | 47-622 |             | 22  | Wire | 895        | Single   | 65      | Defender Safe | Black  |

# CIUDAD C1720

The CST Ciudad is an excellent choice for urban bicycle commuting. The grooved-slick tread rolls fast, and the Defender Mix puncture protection will keep you commuting even on the roughest roads. For increased night visibility, the tire uses a reflective sidewall. Available in both 26" and 700c sizes to meet your commuting needs.



| ITEM       | INCH             | ETRTO  | FRENCH SIZE | TPI | BEAD | WEIGHT (g) | COMPOUND | MAX PSI | TECH         | COLOUR |
|------------|------------------|--------|-------------|-----|------|------------|----------|---------|--------------|--------|
| TB60145000 | 26X1.50          | 40-559 |             | 60  | Wire | 505        | Single   | 65      | Defender Mix | Black  |
| TB88976000 | 28X1 5/8 X 1 1/4 | 32-622 | 700X32C     | 60  | Wire | 530        | Single   | 85      | Defender Mix | Black  |
| TB96441000 | 28X1.625         | 44-622 | 700X42C     | 60  | Wire | 645        | Single   | 75      | Defender Mix | Black  |

# SENSAMO SPEED C1730

As its name suggests, the CST Sensamo Speed is built for one thing: speed. The innovative tread pattern allows the tire to roll fast and corner safely. The CST Sensamo Speed comes equipped with a 60 TPI, dual-compound tread pattern and weighs only 405 grams. The CST Sensamo Speed is available in 700x35c.



| ITEM       | INCH             | ETRTO  | FRENCH SIZE | TPI | BEAD | WEIGHT (g) | COMPOUND | MAX PSI | TECH            | COLOUR |
|------------|------------------|--------|-------------|-----|------|------------|----------|---------|-----------------|--------|
| TB85900200 | 27X1.50          | 40-584 |             | 60  | Wire | 475        | Dual     | 50      | Defender Cobweb | Black  |
| TB91872200 | 28X1 5/8 X 1 3/8 | 37-622 |             | 60  | Wire | 400        | Dual     | 75      |                 | Black  |



# PLATINUM PERFORMANCE C1953

CST introduces a new tire for the ones who love their bike and want the best. The Platinum Performance puts the accent on "performance". A 27 TPI carcass with a Defender Cobweb layer for ultimate anti-puncture protection and top comfort. Not only the Cobweb layer, but also the rubber compound is special. The compound on the sidewall is extremely strong and long lasting. On the central part we have chosen a compound specially made to ride faster. This tire is the ultimate choice for e-bikes, but also for lightweight sport bikes.



PROTECTION LEVEL 3

| ITEM       | INCH             | ETRTO  | FRENCH SIZE | TPI | BEAD | WEIGHT (g) | COMPOUND | MAX PSI | TECH            | COLOUR |
|------------|------------------|--------|-------------|-----|------|------------|----------|---------|-----------------|--------|
| TBA        | 26X1.75          | 47-559 |             | 27  | Wire |            | Single   | 65      | Defender Cobweb | Black  |
| TB90606200 | 28X1 5/8 X 1 3/8 | 37-622 | 700X35C     | 27  | Wire | 760        | Dual     | 75      | Defender Cobweb | Black  |
| TB00035700 | 28X1.50          | 40-622 | 700X38C     | 27  | Wire | 765        | Single   | 75      | Defender Cobweb | Black  |

# CLASSIC BREAKER C1838

In 2012, the Breaker was given a makeover. And to be honest, the result is impressive. The new tread is a delight to see. This is the tyre for people who cycle every day and hate getting a puncture. Thanks to the anti-puncture layer, the tyre lasts even longer and is less likely to go flat. The revamped Breaker is a worthy successor to one of the best-selling urban tyres on the market.



PROTECTION LEVEL 1

| ITEM       | INCH             | ETRTO  | FRENCH SIZE | TPI | BEAD | WEIGHT (g) | COMPOUND | MAX PSI | TECH          | COLOUR |
|------------|------------------|--------|-------------|-----|------|------------|----------|---------|---------------|--------|
| TB54825000 | 26X1 3/8         | 37-590 | 650X35A     | 22  | Wire | 710        | Single   | 65      | Defender Safe | Black  |
| TB64978000 | 26X1.75          | 47-559 |             | 22  | Wire | 965        | Single   | 65      | Defender Safe | Black  |
| TBA        |                  | 28-622 | 700X28C     | 22  | Wire | 560        | Single   | 100     | Defender Safe | Black  |
| TB90111000 | 28X1 5/8 X 1 3/8 | 37-622 | 700X35C     | 22  | Wire | 715        | Single   | 75      | Defender Safe | Black  |
| TB93959000 | 28X1.50          | 40-622 | 700X38C     | 22  | Wire | 795        | Single   | 75      | Defender Safe | Black  |
| TB95198000 | 28X1.75X2        | 47-622 | 700X45C     | 22  | Wire | 990        | Single   | 65      | Defender Safe | Black  |
| TB92353000 | 28X1 1/2         | 40-635 | 700X38B     | 22  | Wire | 895        | Single   | 75      | Defender Safe | Black  |

# STUDMUFFIN C1914

The city version of its mountainbike brother. Carrying 142 studs for any circumstance, nothing will hold you back!



PROTECTION LEVEL 2

| ITEM       | INCH             | ETRTO  | FRENCH SIZE | TPI | BEAD | WEIGHT (g) | COMPOUND | MAX PSI | TECH    | COLOUR |
|------------|------------------|--------|-------------|-----|------|------------|----------|---------|---------|--------|
| TB93903000 | 28X1 5/8 X 1 3/8 | 37-622 | 700X35C     | 27  | Wire | 920        | Single   | 75      | KI/Stud | Black  |

# METROPOLITAN PALMBAY C1779

The CST Metropolitan Palm Bay bicycle tire features a unique tread design that will keep your ride both smooth and stylish. Great for cruising the city or the boardwalk, the Metropolitan Palm Bay offers Defender Safe reinforcement and a reflective sidewall for improved night visibility. A special colored sidewall option is available in grey, copper brown and white.



PROTECTION LEVEL 1



| ITEM       | INCH    | ETRTO  | FRENCH SIZE | TPI | BEAD | WEIGHT (g) | COMPOUND | MAX PSI | TECH          | COLOUR       |
|------------|---------|--------|-------------|-----|------|------------|----------|---------|---------------|--------------|
| TB72685100 | 26X2.15 | 55-559 |             | 22  | Wire | 975        | Single   | 60      | Defender Safe | Black        |
| TB73639000 | 26X2.35 | 60-559 |             | 22  | Wire | 1075       | Single   | 60      | Defender Safe | Caramel      |
| TB96075100 | 28X1.60 | 42-622 | 700X40C     | 22  | Wire | 795        | Single   | 75      | Defender Safe | Black        |
| TB95293000 | 28X2.00 | 50-622 |             | 22  | Wire | 945        | Single   | 65      | Defender Safe | Black        |
| TB95293200 | 28X2.00 | 50-622 |             | 22  | Wire | 905        | Single   | 65      | Defender Safe | C.Brown Wall |
| TB95293300 | 28X2.00 | 50-622 |             | 22  | Wire | 1000       | Single   | 65      | Defender Safe | S-Creme      |
| TB95293400 | 28X2.00 | 50-622 |             | 22  | Wire | 1000       | Single   | 65      | Defender Safe | Caramel      |



# SENSAMO SUMO C1674

Part of the European-based Sensamo line, the CST Sensamo Sumo is engineered to reduce flats and punctures while also providing a smooth, comfortable ride. The grooved-slick tread design of the CST Sensamo Sumo allows this tire to roll fast and corner well. The CST Sensamo Sumo also offers Defender Rebound reinforcement for added puncture protection and is available in a 700x35c.



| ITEM       | INCH             | ETRTO  | FRENCH SIZE | TPI | BEAD | WEIGHT (g) | COMPOUND | MAX PSI | TECH                 | COLOUR |
|------------|------------------|--------|-------------|-----|------|------------|----------|---------|----------------------|--------|
| TB91992000 | 28X1 5/8 X 1 3/8 | 37-622 | 700X35C     | 60  | Wire | 645        | Dual     | 75      | Defender Rebound 3mm | Black  |

# VENICE C3048

The CST Venice is breaking new ground. We fully believe that the new design style for the profile is well on its way to becoming a classic. Beautiful lines that not only make your bike look smarter but are also designed for finer cruising. With stringent quality specifications, this new Urban-MTB model is primarily intended for the trendy Urban-MTB bikes. The revolutionary design and the materials will ensure the best driving behaviour.



| ITEM | INCH      | ETRTO  | FRENCH SIZE | TPI | BEAD | WEIGHT (g) | COMPOUND | MAX PSI | TECH              | COLOUR |
|------|-----------|--------|-------------|-----|------|------------|----------|---------|-------------------|--------|
| TBA  | 27.5X2.40 | 62-584 |             | 60  | Wire | 955        | Dual     | 50      | Defender Allround | Black  |

# SENSAMO MASTER C1839

Getting a puncture with Master tires is virtually impossible. This is because the Sensamo Master has a double anti-puncture system. Two anti-puncture layers, so twice as much protection! This hyper-modern form of anti-puncture protection does not diminish the tire’s flexibility. It still gives a very comfortable ride. This, combined with the minimal risk of getting a puncture, makes every bike ride a pleasant and carefree one.



| ITEM       | INCH             | ETRTO  | FRENCH SIZE | TPI | BEAD | WEIGHT (g) | COMPOUND | MAX PSI | TECH              | COLOUR |
|------------|------------------|--------|-------------|-----|------|------------|----------|---------|-------------------|--------|
| TB64457000 | 26X1.75          | 47-559 |             | 60  | Wire | 870        | Single   | 65      | Defender Ultimate | Black  |
| TB90112000 | 28X1 5/8 X 1 3/8 | 37-622 | 700X35C     | 60  | Wire | 550        | Single   | 75      | Defender Ultimate | Black  |
| TB93961000 | 28X1.50          | 40-622 | 700X38C     | 60  | Wire | 580        | Single   | 75      | Defender Ultimate | Black  |
| TB95122000 | 28X1.75X2        | 47-622 | 700X45C     | 60  | Wire | 895        | Single   | 65      | Defender Ultimate | Black  |





**CST**®

## FAT TIRE

Fun and practical –tires for  
the newest trend in cycling





**NEW** SCOUT  
CEB-01

Tailored for E-MOPED, The CST SCOUT is a high performance tire with a compound pattern for road and cyclocross. The wide grounding pattern can provide excellent grip and stability when on the road, while the transvers and longitudinal knobs can have great acceleration and braking performance together with cyclocross traction in harsh conditions. The tailor-made TURN UP structure and FI fiber anti-puncture protection in the casing make your cycling more comfortable and safe. Special rubber is used on the tread to make a great balance between grasp and rolling resistance.



| ITEM       | INCH    | ETRTO   | FRENCH SIZE | TPI | BEAD | WEIGHT (g) | COMPOUND | MAX PSI | TECH         | COLOUR |
|------------|---------|---------|-------------|-----|------|------------|----------|---------|--------------|--------|
| TB00477700 | 20X4.00 | 100-406 |             | 60  | Wire | 1675       | Single   | 30      | Defender Mix | Black  |



**NEW** TOURANCE  
CEB-02

Tailored for E-MOPED, The CST TOURANCE is a high performance tire for road and cyclocross. Wide knob groups with a sharp shape provide a large grounding area and increase durability and comfort for an easy ride, while continuous closed SIPE and alternate high and low knobs moderately reduce the rigidity, improving slip resistance for comfortable rides and grip for cyclocross. The gradient cutting pattern on the tread shoulder increases the edge effect for different heights, providing excellent grip on uneven roads in cyclocross. The tailor-made TURN UP structure and FI fiber anti-puncture protection in the casing make your cycling more comfortable and safe. Special rubber is used on the tread to make a great balance between grip and rolling resistance.



| ITEM       | INCH    | ETRTO   | FRENCH SIZE | TPI | BEAD | WEIGHT (g) | COMPOUND | MAX PSI | TECH         | COLOUR |
|------------|---------|---------|-------------|-----|------|------------|----------|---------|--------------|--------|
| TB00477800 | 20X4.00 | 100-406 |             | 60  | Wire | 1675       | Single   | 30      | Defender Mix | Black  |





**CST**®

## ROAD

For leisure, training or serious competition – CST has it all



## NEW SPRINT CRD-02

Introducing the Sprint tire, the latest addition to our race-inspired lineup. With its lightweight Defender Cobweb layer for enhanced protection and a high-quality 60 TPI carcass, the Sprint tire combines flexibility and durability like no other. Engineered to excel in speed and performance, this tire is designed to keep you going, no matter the challenge. Experience the perfect balance of strength and responsiveness as you push your limits on the race track. Upgrade to the Sprint tire and unleash your full potential, leaving your competition in the dust.



PROTECTION  
LEVEL 3

| ITEM       | INCH     | ETRTO  | FRENCH SIZE | TPI | BEAD     | WEIGHT (g) | COMPOUND | MAX PSI | TECH            | COLOUR |
|------------|----------|--------|-------------|-----|----------|------------|----------|---------|-----------------|--------|
| TB00504100 | 700 X25C | 25-622 | 700 X25C    | 60  | Wire     | 310        | Dual     | 120     | Defender Cobweb | Black  |
| TB00504200 | 700 X25C | 25-622 | 700 X25C    | 60  | Foldable |            | Dual     | 120     | Defender Cobweb | Black  |
| TB00504300 | 700 X28C | 28-622 | 700 X28C    | 60  | Wire     | 340        | Dual     | 120     | Defender Cobweb | Black  |
| TB00504400 | 700 X28C | 28-622 | 700 X28C    | 60  | Foldable |            | Dual     | 120     | Defender Cobweb | Black  |

## ENERGIA C3045

The latest tire to be added to our race family. The CST Energia features a lightweight Defender Cobweb layer for protection and a high-end 120 TPI carcass for subtleness and strength, the Energia truly lives up to its name. This tire will keep you going no matter what!



PROTECTION  
LEVEL 3

| ITEM       | INCH             | ETRTO  | FRENCH SIZE | TPI | BEAD     | WEIGHT (g) | COMPOUND | MAX PSI | TECH            | COLOUR |
|------------|------------------|--------|-------------|-----|----------|------------|----------|---------|-----------------|--------|
| TB00252500 | 28X1.00          | 25-622 | 700X25C     | 120 | Foldable | 250        | Dual     | 120     | Defender Cobweb | Black  |
| TB00252600 | 28X1 5/8 X 1 1/8 | 28-622 | 700X28C     | 120 | Foldable | 300        | Dual     | 120     | Defender Cobweb | Black  |

## CIRCUIT C3008

The Circuit is a lightweight and high performance road tire. This feature packed tire will help get you from A to B faster. The slick center tread keeps things rolling quickly in the straights. The progressive shoulder tread provides riders a connected feeling in the corners, giving confidence to push as much as the road will let you. The supple casing reduces rolling resistance and smooths the road for a comfortable ride. Lightweight construction eases acceleration, allowing you to accelerate even faster. A high performance construction features a dual compound for improved cornering grip and even lower rolling resistance.

| ITEM       | INCH    | ETRTO  | FRENCH SIZE | TPI | BEAD     | WEIGHT (g) | COMPOUND | MAX PSI | TECH            | COLOUR |
|------------|---------|--------|-------------|-----|----------|------------|----------|---------|-----------------|--------|
| TB00179800 | 28X1.00 | 25-622 | 700X25C     | 27  | Wire     | 340        | Single   | 120     |                 | Black  |
| TB00179900 | 28X1.00 | 25-622 | 700X25C     | 60  | Foldable | 280        | Dual     | 120     | Defender Cobweb | Black  |



PROTECTION  
LEVEL 3

## CORRERE C1691

The CST Correre is a full-featured road bike tire suitable for training and racing. The dual-compound rubber offers improved tread wear plus increased traction and control while cornering. The folding bead version of the Correre features a 120 TPI casing and Defender Cobweb puncture protection to provide excellent ride quality and durability. The Correre is the answer for any rider who wants an upgraded road experience.



PROTECTION  
LEVEL 3

| ITEM       | INCH    | ETRTO  | FRENCH SIZE | TPI | BEAD     | WEIGHT (g) | COMPOUND | MAX PSI | TECH            | COLOUR |
|------------|---------|--------|-------------|-----|----------|------------|----------|---------|-----------------|--------|
| TB86037000 |         | 20-622 | 700X20C     | 120 | Foldable | 190        | Dual     | 130     | Defender Cobweb | Black  |
| TB86306700 | 28X7/8  | 23-622 | 700X23C     | 27  | Wire     | 305        | Dual     | 130     |                 | Black  |
| TB86306200 | 28X7/8  | 23-622 | 700X23C     | 120 | Foldable | 235        | Dual     | 130     | Defender Cobweb | Black  |
| TB86307600 | 28X7/8  | 23-622 | 700X23C     | 170 | Foldable | 170        | Dual     | 130     | Defender Cobweb | Black  |
| TB86607200 | 28X1.00 | 25-622 | 700X25C     | 27  | Wire     | 310        | Dual     | 130     |                 | Black  |
| TB86607000 | 28X1.00 | 25-622 | 700X25C     | 120 | Foldable | 195        | Dual     | 130     | Defender Cobweb | Black  |
| TB86607100 | 28X1.00 | 25-622 | 700X25C     | 170 | Foldable | 205        | Dual     | 130     | Defender Cobweb | Black  |



ALSO AVAILABLE  
WITH DEFENDER  
COBWEB  
**CLXX**  
170 TPI



# CITO C1922

Lighter, more flexible and stronger than the competition. That was the order and that's what CST's engineers delivered. The Cito can compete with the best racing tires in the market. The carcass consists of 170 TPI, so these tires are flexible and strong. Available in various colors and, of course, in addition to the familiar 23-622 size, also available in wider sizes 25-622. With the Cito, CST introduces a top-class product to the racing segment.

**Colours:** Black/Blue, Black, Black/Yellow, Black/White Black/Red.



Black/61 Black/50 Black/52 Black/29 Black



| ITEM       | INCH             | ETRTO  | FRENCH SIZE | TPI | BEAD     | WEIGHT (g) | COMPOUND | MAX PSI | TECH            | COLOUR |
|------------|------------------|--------|-------------|-----|----------|------------|----------|---------|-----------------|--------|
| TB86297700 | 28X 7/8          | 23-622 | 700X23C     | 170 | Foldable | 185        | Dual     | 120     | Defender Cobweb | Black  |
| TB86380100 | 28X1.00          | 25-622 | 700X25C     | 170 | Foldable | 190        | Dual     | 120     | Defender Cobweb | Black  |
| TB88750000 | 28X1 5/8 X 1 1/8 | 28-622 | 700X28C     | 170 | Foldable | 240        | Dual     | 120     | Defender Cobweb | Black  |

# STRADALE C7R

CST is proud to present its first handmade tubular tire: the Stradale. Extensive research and extensive testing went into the development of this high-end product, and a special production line at the CST factory is dedicated to the creation of this "race monster." The well-known diamond profile ensures supreme performance on both wet and dry road surfaces. This tubular also incorporates Aramide Inside technology, a type of puncture resistance first introduced in 2015. Highly flexible, the anti-puncture layer hardly adds any weight at all but does offer the best protection against punctures on the market. The Stradale is fitted by all teams sponsored by CST, including the Italian Pro Continental team Bardiani CSF.



PROTECTION LEVEL 6

| ITEM       | INCH  | ETRTO | FRENCH SIZE | TPI | BEAD     | WEIGHT (g) | COMPOUND | MAX PSI | TECH | COLOUR |
|------------|-------|-------|-------------|-----|----------|------------|----------|---------|------|--------|
| TB88209000 | 28X25 |       |             | 120 | Foldable | 295        | Triple   | 120     | KN   | Black  |

# RECOURSE C1808

The Recourse from CST is an excellent choice for road riders who want a larger volume tire for training or competition. The folding bead version of the Recourse uses a 120 TPI casing to reduce weight and improve ride quality. A layer of our Defender Cobweb puncture protection is incorporated into the casing to help prevent flats.



PROTECTION LEVEL 3 4

| ITEM       | INCH             | ETRTO  | FRENCH SIZE | TPI | BEAD     | WEIGHT (g) | COMPOUND | MAX PSI | TECH              | COLOUR |
|------------|------------------|--------|-------------|-----|----------|------------|----------|---------|-------------------|--------|
| TB86284300 | 28X 7/8          | 23-622 | 700X23C     | 27  | Wire     | 300        | Dual     | 120     |                   | Black  |
| TB86399200 | 28X1.00          | 25-622 | 700X25C     | 27  | Wire     | 340        | Dual     | 120     |                   | Black  |
| TB86399100 | 28X1.00          | 25-622 | 700X25C     | 120 | Foldable | 215        | Dual     | 120     | Defender Cobweb   | Black  |
| TB88748000 | 28X1 5/8 X 1 1/8 | 28-622 | 700X28C     | 27  | Wire     | 340        | Dual     | 120     |                   | Black  |
| TB88748200 | 28X1 5/8 X 1 1/8 | 28-622 | 700X28C     | 120 | Foldable | 250        | Dual     | 120     | Defender Cobweb   | Black  |
| TB00231300 |                  | 30-622 | 700X30C     | 60  | Foldable | 380        | Dual     | 75      | Defender Allround | Black  |

# CONQUISTARE C1761

The CST Conquistare is designed to do one thing – conquer all road conditions. This road tire features a slick center designed to lower rolling resistance and provide consistent wear. The shoulders use a file-patterned design to maximise cornering ability. Select the folding bead option with Defender Cobweb and Nylon Cap puncture protection for a highly-durable road bicycle training tire.



PROTECTION LEVEL 3

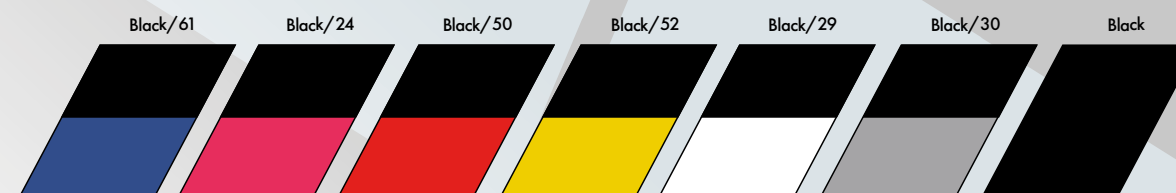
| ITEM       | INCH    | ETRTO  | FRENCH SIZE | TPI | BEAD     | WEIGHT (g) | COMPOUND | MAX PSI | TECH                        | COLOUR |
|------------|---------|--------|-------------|-----|----------|------------|----------|---------|-----------------------------|--------|
| TB05900000 | 14X1.10 | 28-254 |             | 60  | Wire     | 130        | Single   | 100     |                             | Black  |
| TB20445100 | 20X1.10 | 28-406 |             | 60  | Wire     | 215        | Single   | 100     | Defender Cobweb             | Black  |
| TB81768100 | 28X 7/8 | 23-622 | 700X23C     | 27  | Wire     | 310        | Single   | 120     |                             | Black  |
| TB81768000 | 28X 7/8 | 23-622 | 700X23C     | 60  | Foldable | 280        | Single   | 120     | Defender Cobweb + Nylon Cap | Black  |
| TB86465100 | 28X1.00 | 25-622 | 700X25C     | 27  | Wire     | 315        | Single   | 110     |                             | Black  |
| TB86465000 | 28X1.00 | 25-622 | 700X25C     | 60  | Foldable | 295        | Single   | 110     | Defender Cobweb + Nylon Cap | Black  |





# CZAR C1406

Perfect for the style-conscious rider, the CST Czar road bike tire is available with several color options sure to match any bicycle. Available in 23 and 25mm widths, the Czar can be used for commuting or training on the road. Take corners with ease thanks to the dual-compound rubber. Choose the Defender Cobweb puncture protection option for increased durability.



| ITEM       | INCH                            | ETRTO  | FRENCH SIZE | TPI | BEAD     | WEIGHT (g) | COMPOUND | MAX PSI | TECH            | COLOUR       |
|------------|---------------------------------|--------|-------------|-----|----------|------------|----------|---------|-----------------|--------------|
| TB20113000 | 20X1.00                         | 23-420 |             | 60  | Wire     | 195        | Dual     | 100     |                 | Black        |
| TB36016000 | 22X1.00                         | 23-470 |             | 60  | Wire     | 225        | Single   | 100     |                 | Black        |
| TB41232000 | 24X1.00                         | 23-520 |             | 60  | Wire     | 245        | Single   | 100     |                 | Black        |
| TB41232300 | 24X1.00                         | 23-520 |             | 30  | Wire     | 365        | Single   | 100     |                 | Black        |
| TB51759200 | 26X <sup>7</sup> / <sub>8</sub> | 23-571 | 650X23C     | 27  | Wire     | 265        | Dual     | 120     |                 | Black/Blue   |
| TB51759300 | 26X <sup>7</sup> / <sub>8</sub> | 23-571 | 650X23C     | 27  | Wire     | 265        | Dual     | 120     |                 | Black/Grey   |
| TB51759100 | 26X <sup>7</sup> / <sub>8</sub> | 23-571 | 650X23C     | 27  | Wire     | 265        | Dual     | 120     |                 | Black/Red    |
| TB51759400 | 26X <sup>7</sup> / <sub>8</sub> | 23-571 | 650X23C     | 27  | Wire     | 265        | Dual     | 120     |                 | Black/Yellow |
| TB86323800 | 28X <sup>7</sup> / <sub>8</sub> | 23-622 | 700X23C     | 27  | Wire     | 285        | Dual     | 120     |                 | Black/Black  |
| TB86323900 | 28X <sup>7</sup> / <sub>8</sub> | 23-622 | 700X23C     | 27  | Wire     | 285        | Dual     | 120     |                 | Black/Blue   |
| TB86322400 | 28X <sup>7</sup> / <sub>8</sub> | 23-622 | 700X23C     | 27  | Wire     | 290        | Dual     | 120     |                 | Black/Green  |
| TB86322500 | 28X <sup>7</sup> / <sub>8</sub> | 23-622 | 700X23C     | 27  | Wire     | 290        | Dual     | 120     |                 | Black/Grey   |
| TB86320400 | 28X <sup>7</sup> / <sub>8</sub> | 23-622 | 700X23C     | 27  | Wire     | 290        | Dual     | 120     |                 | Black/Orange |
| TB86320500 | 28X <sup>7</sup> / <sub>8</sub> | 23-622 | 700X23C     | 27  | Wire     | 290        | Dual     | 120     |                 | Black/Pink   |
| TB86323700 | 28X <sup>7</sup> / <sub>8</sub> | 23-622 | 700X23C     | 27  | Wire     | 290        | Dual     | 120     |                 | Black/Red    |
| TB86319200 | 28X <sup>7</sup> / <sub>8</sub> | 23-622 | 700X23C     | 27  | Wire     | 290        | Dual     | 120     |                 | Black/White  |
| TB86323600 | 28X <sup>7</sup> / <sub>8</sub> | 23-622 | 700X23C     | 27  | Wire     | 290        | Dual     | 120     |                 | Black/Yellow |
| TB86325400 | 28X <sup>7</sup> / <sub>8</sub> | 23-622 | 700X23C     | 60  | Foldable | 240        | Dual     | 120     | Defender Cobweb | Black/Blue   |
| TB86320600 | 28X <sup>7</sup> / <sub>8</sub> | 23-622 | 700X23C     | 60  | Foldable | 240        | Dual     | 120     | Defender Cobweb | Black/Grey   |

| ITEM       | INCH   | ETRTO  | FRENCH SIZE | TPI | BEAD     | WEIGHT (g) | COMPOUND | MAX PSI | TECH            | COLOUR       |
|------------|--|--------|-------------|-----|----------|------------|----------|---------|-----------------|--------------|
| TB86325500 | 28X <sup>7</sup> / <sub>8</sub>                                  | 23-622 | 700X23C     | 60  | Foldable | 240        | Dual     | 120     | Defender Cobweb | Black/Red    |
| TB86325600 | 28X <sup>7</sup> / <sub>8</sub>                                  | 23-622 | 700X23C     | 60  | Foldable | 240        | Dual     | 120     | Defender Cobweb | Black/Yellow |
| TB86395300 | 28X1.00  | 25-622 | 700X25C     | 27  | Wire     | 310        | Dual     | 120     |                 | Black/Black  |
| TB86395400 | 28X1.00  | 25-622 | 700X25C     | 27  | Wire     | 315        | Dual     | 120     |                 | Black/Blue   |
| TB86394800 | 28X1.00  | 25-622 | 700X25C     | 27  | Wire     | 305        | Dual     | 120     |                 | Black/Green  |
| TB86395600 | 28X1.00  | 25-622 | 700X25C     | 27  | Wire     | 310        | Dual     | 120     |                 | Black/Grey   |
| TB86394600 | 28X1.00  | 25-622 | 700X25C     | 27  | Wire     | 315        | Dual     | 120     |                 | Black/Orange |
| TB86394700 | 28X1.00  | 25-622 | 700X25C     | 27  | Wire     | 315        | Dual     | 120     |                 | Black/Pink   |
| TB86395500 | 28X1.00  | 25-622 | 700X25C     | 27  | Wire     | 310        | Dual     | 120     |                 | Black/Red    |
| TB86394500 | 28X1.00  | 25-622 | 700X25C     | 27  | Wire     | 315        | Dual     | 120     |                 | Black/White  |
| TB86395700 | 28X1.00  | 25-622 | 700X25C     | 27  | Wire     | 310        | Dual     | 120     |                 | Black/Yellow |
| TB86396900 | 28X1.00  | 25-622 | 700X25C     | 60  | Foldable | 240        | Dual     | 120     | Defender Cobweb | Black/Blue   |
| TB86395800 | 28X1.00  | 25-622 | 700X25C     | 60  | Foldable | 240        | Dual     | 120     | Defender Cobweb | Black/Grey   |
| TB86396700 | 28X1.00  | 25-622 | 700X25C     | 60  | Foldable | 240        | Dual     | 120     | Defender Cobweb | Black/Red    |
| TB86395200 | 28X1.00  | 25-622 | 700X25C     | 60  | Foldable | 240        | Dual     | 120     | Defender Cobweb | Black/Yellow |
| TB88749000 | 28X1 <sup>5</sup> / <sub>8</sub> X 1 <sup>1</sup> / <sub>8</sub> | 28-622 | 700X28C     | 27  | Wire     | 330        | Dual     | 120     |                 | Black/Red    |





# CALDERA C1719

The CST Caldera is the ideal tire for road bicycle training and commuting. With its thicker layer of tread rubber, the Caldera is sure to provide many trouble-free miles. Choose the Defender Cobweb puncture protection option for increased durability on your road tire.

| ITEM       | INCH             | ETRTO  | FRENCH SIZE | TPI | BEAD     | WEIGHT (g) | COMPOUND | MAX PSI | TECH                 | COLOUR |
|------------|------------------|--------|-------------|-----|----------|------------|----------|---------|----------------------|--------|
| TB60148000 | 26X1.50          | 40-559 |             | 60  | Wire     | 410        | Single   | 65      | Defender Cobweb      | Black  |
| TB85931200 | 27.5 X2.00       | 50-584 |             | 30  | Wire     | 1135       | Single   | 65      | Defender Rebound 3mm | Black  |
| TB86464000 | 28x1.00          | 25-622 | 700X25C     | 27  | Wire     | 340        | Single   | 110     |                      | Black  |
| TB86464500 | 28x1.00          | 25-622 | 700X25C     | 60  | Foldable | 270        | Single   | 110     | Defender Cobweb      | Black  |
| TB88732000 | 28X1 5/8 X 1 1/8 | 28-622 | 700X28C     | 27  | Wire     | 385        | Single   | 100     |                      | Black  |
| TB88732500 | 28X1 5/8 X 1 1/8 | 28-622 | 700X28C     | 60  | Foldable | 335        | Single   | 100     | Defender Cobweb      | Black  |







**CST**<sup>®</sup>

## CYCLOCROSS

Capable of handling all conditions





# CRISSCROSS C1893

On country paths or rigorous cyclocross trails, ride with confidence on the Crisscross. This all-around tire features an open tread design to shed mud quickly, while block-style intermediate knobs offer grip in loose sand and dirt for both braking and acceleration. The Crisscross's ramped and slotted centre knobs provide low rolling resistance and strong bite under braking, and angular side knobs in a softer compound deliver confidence in fast corners. Available in 700x32C with 60 TPI casing featuring Defender Cobweb puncture protection.



| ITEM        | INCH             | ETRTO  | FRENCH SIZE | TPI | BEAD     | WEIGHT (g) | COMPOUND | MAX PSI | TECH            | COLOUR |
|-------------|------------------|--------|-------------|-----|----------|------------|----------|---------|-----------------|--------|
| TB888978000 | 28X1 5/8 X 1 1/4 | 32-622 | 700X32C     | 60  | Wire     | 365        | Dual     | 85      | Defender Cobweb | Black  |
| TB00122500  |                  | 40-622 | 700X40C     | 60  | Foldable | 445        | Dual     | 75      | Defender Cobweb | Black  |

# CULTIVATOR C1604

Capable of handling all conditions, the CST Cultivator is an aggressive cyclocross bicycle tire designed to shed mud quickly and deliver maximum traction. The Cultivator can also be used by those who like to seek out a little dirt on their daily commute.

| ITEM       | INCH             | ETRTO  | FRENCH SIZE | TPI | BEAD | WEIGHT (g) | COMPOUND | MAX PSI | TECH | COLOUR |
|------------|------------------|--------|-------------|-----|------|------------|----------|---------|------|--------|
| TB88897000 | 28X1 5/8 X 1 1/4 | 32-622 | 700X32C     | 60  | Wire | 450        | Single   | 85      |      | Black  |





**CST**

## GRAVEL

Capable of handling all conditions



## OVERTON CRD-01

The Overton is a fast rolling gravel tire that features a smooth centre section with knurling at the mid-point of the tire. The pronounced side knobs of the Overton let you lean your bike through the tightest turns with ease. The Overton also features a tubeless ready casing and our Defender Cobweb puncture protection.



PROTECTION  
LEVEL 3

| ITEM       | INCH      | ETRTO  | FRENCH<br>SIZE | TPI | BEAD     | WEIGHT<br>(g) | COMPOUND | MAX<br>PSI | TECH | COLOUR  |
|------------|-----------|--------|----------------|-----|----------|---------------|----------|------------|------|---------|
| TB00492300 | 27.5X2.00 | 50-584 |                | 60  | Foldable | 580           | Dual     | 75         | TLR  | Black   |
| TB00459600 | 28X1.50   | 40-622 | 700X40C        | 60  | Foldable | 460           | Dual     | 75         | TLR  | Black   |
| TB00492600 | 28X1.50   | 40-622 | 700X40C        | 60  | Foldable | 485           | Dual     | 75         | TLR  | Brown W |

## PIKA C1894

The CST Pika is a dirt road tire built to handle the ever-changing conditions encountered during your daily commute or a weekend gravel grind. The tire has ramped centre knobs for a smooth, fast ride, while the shoulder tread features U-shaped knobs designed to give you confidence in the turns. The CST Pika comes in 700x38c and is equipped with dual compound tread, Defender Cobweb protection and wire bead.



PROTECTION  
LEVEL 3

| ITEM       | INCH             | ETRTO  | FRENCH<br>SIZE | TPI | BEAD     | WEIGHT<br>(g) | COMPOUND | MAX<br>PSI | TECH                 | COLOUR      |
|------------|------------------|--------|----------------|-----|----------|---------------|----------|------------|----------------------|-------------|
| TB88981000 | 28X1 5/8 X 1 1/4 | 32-622 | 700X32C        | 60  | Wire     | 385           | Dual     | 75         | Defender Cobweb      | Black       |
| TB91987000 | 28X1 5/8 X 1 3/8 | 35-622 | 700X35C        | 60  | Wire     | 410           | Dual     | 75         | Defender Cobweb      | Black       |
| TB97714000 | 28X1.50          | 40-622 | 700X38C        | 60  | Wire     | 425           | Dual     | 75         | Defender Cobweb      | Black       |
| TB97714100 | 28X1.50          | 40-622 | 700X38C        | 60  | Foldable | 360           | Dual     | 75         | Defender Cobweb      | Black       |
| TB00247800 | 28X1.50          | 40-622 | 700X38C        | 60  | Foldable | 480           | Dual     | 75         | Defender Cobweb /TLR | Black       |
| TB00281600 | 28X1.50          | 40-622 | 700X38C        | 60  | Foldable | 510           | Dual     | 75         | Defender Cobweb /TLR | Coffee wall |
| TB96444000 | 28X1.625         | 42-622 | 700X42C        | 60  | Wire     | 510           | Dual     | 75         | Defender Cobweb      | Black       |
| TB00285000 | 28X1.625         | 42-622 | 700X42C        | 60  | Foldable | 550           | Dual     | 75         | Defender Cobweb /TLR | Coffee wall |

## DETOUR C3015

Take the long way home! The Detour is a fast rolling, high volume, and lightweight commuter tire that provides traction in a variety of urban terrain. The Detour features a fast rolling centre tread with features that aide wet traction to make sure you stay upright on those rainy commutes. Shoulder knobs provide traction when leaned in grass and dirt, but they stay out of the way to keep you rolling fast in a straight line. CST's protection layer Defender Cobweb prevents punctures in the tread area, keeping you riding trouble free. The Detour's reflective sidewall stripes help visibility, so other road users see you night and day!



PROTECTION  
LEVEL 3

| ITEM       | INCH    | ETRTO  | FRENCH<br>SIZE | TPI | BEAD     | WEIGHT<br>(g) | COMPOUND | MAX<br>PSI | TECH                 | COLOUR      |
|------------|---------|--------|----------------|-----|----------|---------------|----------|------------|----------------------|-------------|
| TB00180000 | 28X1.50 | 38-622 | 700X38         | 60  | Wire     | 465           | Dual     | 75         | Defender Cobweb      | Black       |
| TB00395300 | 28X1.50 | 38-622 | 700X38         | 60  | Foldable | 525           | Dual     | 75         | Defender Cobweb /TLR | Coffee wall |

## CONVOY C3017

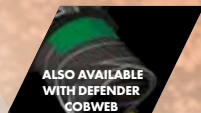
Grab your friends and get out there with the Convoy. This tread pattern has been engineered for the new generation of versatile all-road and gravel bikes. The tread is optimised for each of the multiple widths offered, allowing you to run as much tire volume as your frame allows. Even knob spacing gives you a consistent and connected feel that will keep you rubber side down whether you're in midwestern chunk gravel or small particle kitty litter. A supple casing provides all day comfort and excellent rolling speed. CST's Defender Cobweb protection under the tread will prevent punctures from slowing you down.



PROTECTION  
LEVEL 3

| ITEM       | INCH             | ETRTO  | FRENCH<br>SIZE | TPI | BEAD     | WEIGHT<br>(g) | COMPOUND | MAX<br>PSI | TECH                 | COLOUR      |
|------------|------------------|--------|----------------|-----|----------|---------------|----------|------------|----------------------|-------------|
| TB00158700 | 28X1 5/8 X 1 1/4 | 32-622 | 700X32C        | 60  | Wire     | 375           | Dual     | 85         | Defender Cobweb      | Black       |
| TB00180100 | 28X1.50          | 38-622 | 700X38C        | 60  | Wire     | 455           | Dual     | 75         | Defender Cobweb      | Black       |
| TB00395000 | 28X1.50          | 38-622 | 700X38C        | 60  | Foldable | 510           | Dual     | 75         | Defender Cobweb /TLR | Coffee wall |
| TB00158900 | 29X2.00          | 50-622 | 700X50C        | 60  | Wire     | 645           | Dual     | 65         | Defender Cobweb      | Black       |
| TB00395100 | 29X2.00          | 50-622 | 700X50C        | 60  | Foldable | 630           | Dual     | 65         | Defender Cobweb /TLR | Black       |





# TIRENT C1870N

Gravel riding is becoming increasingly popular, and 40C is the most common size. CST's Tirent tire is based on the B-Fast model with slight variations in the shoulder. It is a completely new gravel tire in a 700x40C size for dirt and gravel roads.

| ITEM       | INCH | ETRTO  | FRENCH SIZE | TPI | BEAD     | WEIGHT (g) | COMPOUND | MAX PSI | TECH                  | COLOUR      |
|------------|------|--------|-------------|-----|----------|------------|----------|---------|-----------------------|-------------|
| TB96274000 |      | 40-622 | 700X40C     | 60  | Wire     | 510        | Dual     | 75      | Defender Cobweb       | Black       |
| TB00093100 |      | 40-622 | 700X40C     | 60  | Foldable | 450        | Dual     | 75      | Defender Cobweb       | Black       |
| TB00369700 |      | 44-622 | 700X42C     | 60  | Foldable | 575        | Dual     | 75      | Defender Cobweb / TLR | Coffee wall |







**CST**®

## MOUNTAIN BIKE

Hardpack, loose or dirt –  
CST has the right tread patterns



# GRAVATEER CMT-03

An all new addition to the CST MTB range. Featuring a triple compound for maximum grip in all conditions and angles in combination with DownHill technology for performance under every type of pressure.



PROTECTION LEVEL 3

| ITEM       | INCH      | ETRTO  | FRENCH SIZE | TPI | BEAD     | WEIGHT (g) | COMPOUND   | MAX PSI | TECH            | COLOUR |
|------------|-----------|--------|-------------|-----|----------|------------|------------|---------|-----------------|--------|
| TB00462900 | 27.5X2.50 | 64-584 |             | 60  | Wire     | 1400       | 3C(Triple) | 50      | Defender Cobweb | Black  |
| TB00501600 | 27.5X2.50 | 64-584 |             | 60  | Foldable | 1350       | 3C(Triple) | 50      | Defender Cobweb | Black  |
| TB00463000 | 29X2.50   | 64-622 |             | 60  | Wire     | 1490       | 3C(Triple) | 50      | Defender Cobweb | Black  |
| TB00501700 | 29X2.50   | 64-622 |             | 60  | Foldable | 1430       | 3C(Triple) | 50      | Defender Cobweb | Black  |

# MUDLOCK CMT-06

CST developed a new tire especially for the most difficult circumstances; Mudlock. This tire is equipped with square-featured knobs that provide the maximum amount of grip. In addition, we use the softest compound to further optimise your ride. The position of the knobs ensures that mud does not stick on the tire. We are proud to mention that the Mudlock has been used by several riders during the Olympics of 2021



PROTECTION LEVEL 3

| ITEM       | INCH    | ETRTO  | FRENCH SIZE | TPI | BEAD     | WEIGHT (g) | COMPOUND   | MAX PSI | TECH            | COLOUR |
|------------|---------|--------|-------------|-----|----------|------------|------------|---------|-----------------|--------|
| TB00447800 | 29X2.10 | 53-622 |             | 170 | Foldable | 685        | 3C(Triple) | 65      | Defender Cobweb | Black  |

# B-TRAIL C1861P

The CST B-Trail mountain bike tire is a versatile trail tire sure to make your jaw drop. The CST B-Trail's unique tread pattern features short, alternating knobs on the centre tread for exceptional traction and lightning-fast speed. The side knobs are taller and more aggressive to ensure confident, flawless transitions coming in and out of turns. The CST B-Trail is available in folding bead with CLXX technology (170 TPI), making it the lightest mountain bike tire in the CST line-up.



PROTECTION LEVEL 3

ALSO AVAILABLE WITH DEFENDER COBWEB

CLXX 170 TPI

| ITEM       | INCH       | ETRTO  | FRENCH SIZE | TPI | BEAD     | WEIGHT (g) | COMPOUND | MAX PSI | TECH            | COLOUR |
|------------|------------|--------|-------------|-----|----------|------------|----------|---------|-----------------|--------|
| TB00363700 | 26 X1.95   | 50-559 |             | 60  | Wire     | 534        | Dual     | 65      | Defender Cobweb | Black  |
| TB69920000 | 26x2.10    | 53-559 |             | 170 | Foldable | 575        | Dual     | 65      | Defender Cobweb | Black  |
| TB00363800 | 27.5 X1.95 | 50-584 |             | 60  | Wire     | 601        | Dual     | 65      | Defender Cobweb | Black  |
| TB85940000 | 27.5 X2.10 | 52-584 |             | 60  | Wire     | 647        | Dual     | 65      | Defender Cobweb | Black  |
| TB91038000 | 27.5X2.25  | 57-584 |             | 170 | Foldable | 480        | Dual     | 65      | Defender Cobweb | Black  |
| TB00030000 | 27.5 X2.60 | 66-584 |             | 60  | Foldable | 835        | Dual     | 65      |                 | Black  |
| TB96715100 | 29X2.25    | 57-622 |             | 170 | Foldable | 505        | Dual     | 65      | Defender Cobweb | Black  |

# TOBOGGAN C3027

This is a big one! The CST Toboggan is an oversize spike tire, suited for the most extreme conditions. Take a look and see for yourself!



PROTECTION LEVEL 3

| ITEM       | INCH    | ETRTO   | FRENCH SIZE | TPI | BEAD | WEIGHT (g) | COMPOUND | MAX PSI | TECH       | COLOUR |
|------------|---------|---------|-------------|-----|------|------------|----------|---------|------------|--------|
| TB00258800 | 26X4.00 | 100-559 |             | 60  | Wire | 1600       | Dual     | 30      | Black/Stud | Black  |
| TB00258900 | 26X4.00 | 100-559 |             | 60  | Wire | 1600       | Dual     | 30      | Black      | Black  |



## DIRT FIEND C3003

An all new addition to the off-road family. Featuring a 60 TPI carcass for strength and subtleness combined with our Defender Allround protection layer from bead-wire to bead-wire, the Dirt Fiend is a true off-roader for people who want to get the most out of their ride!



| ITEM       | INCH      | ETRTO  | FRENCH SIZE | TPI | BEAD | WEIGHT (g) | COMPOUND | MAX PSI | TECH              | COLOUR |
|------------|-----------|--------|-------------|-----|------|------------|----------|---------|-------------------|--------|
| TB00198400 | 27.5X2.35 | 60-584 |             | 60  | Wire | 995        | Dual     | 65      | Defender Allround | Black  |
| TB00198500 | 29X2.35   | 60-622 |             | 60  | Wire | 1040       | Dual     | 65      | Defender Allround | Black  |

## HEATHEN C1768

The CST Heathen is an excellent choice for aggressive riding in hardpack to loose conditions. The centre of the tire features low, widely-spaced knobs to aid in debris shedding. The shoulder knobs have a tall profile to really dig in when the bicycle is leaned over. The Heathen is available in wire or folding bead versions. The folding bead version features a dual-compound tread for improved grip, and our Defender Cobweb puncture protection.



| ITEM       | INCH      | ETRTO  | FRENCH SIZE | TPI | BEAD     | WEIGHT (g) | COMPOUND | MAX PSI | TECH                 | COLOUR |
|------------|-----------|--------|-------------|-----|----------|------------|----------|---------|----------------------|--------|
| TB00186300 | 26X1.95   | 50-559 |             | 60  | Wire     | 680        | Dual     | 65      | Defender Cobweb      | Black  |
| TB69979100 | 26X2.10   | 52-559 |             | 27  | Wire     | 690        | Dual     | 65      |                      | Black  |
| TB69979000 | 26X2.10   | 52-559 |             | 60  | Foldable | 615        | Dual     | 65      | Defender Cobweb      | Black  |
| TB72606100 | 26X2.25   | 54-559 |             | 27  | Wire     | 810        | Dual     | 65      |                      | Black  |
| TB72606000 | 26X2.25   | 54-559 |             | 60  | Foldable | 730        | Dual     | 65      | Defender Cobweb      | Black  |
| TB00186400 | 27.5X1.95 | 50-584 |             | 60  | Wire     | 710        | Dual     | 65      | Defender Cobweb      | Black  |
| TB85953300 | 27.5x2.10 | 52-584 |             | 27  | Wire     | 725        | Dual     | 65      |                      | Black  |
| TB85953100 | 27.5x2.10 | 52-584 |             | 60  | Foldable | 645        | Dual     | 65      | Defender Cobweb      | Black  |
| TB90957000 | 27.5X2.10 | 52-584 |             | 60  | Foldable | 655        | Dual     | 65      | Defender Cobweb /TLR | Black  |
| TB91036000 | 27.5X2.25 | 54-584 |             | 27  | Wire     | 860        | Dual     | 65      |                      | Black  |
| TB91036100 | 27.5X2.25 | 54-584 |             | 60  | Foldable | 675        | Dual     | 65      | Defender Cobweb      | Black  |

## OUSTER C1807

The CST Ouster is designed to tackle technical all-mountain trails. The tall, open centre tread keeps the mud on the ground and off your tires, and grips roots and rocks while climbing. The aggressive side knobs dig into loose soil and give you the confidence to rail your bicycle through the turns. The Ouster is available with a wire or folding bead in 26" and 29" sizes. Folding bead versions also feature dual-compound rubber and Defender Cobweb puncture protection.



| ITEM       | INCH      | ETRTO  | FRENCH SIZE | TPI | BEAD     | WEIGHT (g) | COMPOUND | MAX PSI | TECH                 | COLOUR |
|------------|-----------|--------|-------------|-----|----------|------------|----------|---------|----------------------|--------|
| TB00113200 | 22X2.25   | 57-457 |             | 27  | Wire     | 675        | Dual     | 65      |                      | Black  |
| TB00113300 | 24X2.25   | 57-507 |             | 27  | Wire     | 765        | Dual     | 65      |                      | Black  |
| TB72630100 | 26X2.25   | 57-559 |             | 27  | Wire     | 815        | Single   | 65      |                      | Black  |
| TB72630000 | 26X2.25   | 57-559 |             | 60  | Foldable | 690        | Dual     | 65      | Defender Cobweb      | Black  |
| TB74175600 | 26X2.40   | 60-559 |             | 27  | Wire     | 960        | Single   | 65      |                      | Black  |
| TB74175500 | 26X2.40   | 60-559 |             | 60  | Foldable | 825        | Dual     | 65      | Defender Cobweb      | Black  |
| TB90982100 | 27.5X2.25 | 57-584 |             | 27  | Wire     | 820        | Single   | 65      |                      | Black  |
| TB90982000 | 27.5X2.25 | 57-584 |             | 60  | Foldable | 715        | Dual     | 65      | Defender Cobweb /TLR | Black  |
| TB91054100 | 27.5X2.40 | 60-584 |             | 27  | Wire     | 970        | Single   | 65      |                      | Black  |
| TB91054000 | 27.5X2.40 | 60-584 |             | 60  | Foldable | 870        | Dual     | 65      | Defender Cobweb      | Black  |
| TB96719600 | 29X2.25   | 56-622 |             | 27  | Wire     | 870        | Single   | 65      |                      | Black  |
| TB96719500 | 29X2.25   | 56-622 |             | 60  | Foldable | 715        | Dual     | 65      | Defender Cobweb /TLR | Black  |
| TB96787000 | 29X2.40   | 60-622 |             | 27  | Wire     | 975        | Single   | 65      |                      | Black  |
| TB96788000 | 29X2.40   | 60-622 |             | 60  | Foldable | 845        | Dual     | 65      | Defender Cobweb      | Black  |





# PATROL C1846

The CST Patrol mountain bike tire features a versatile tread pattern suitable for a broad range of conditions. The medium-height centre knobs are ramped to reduce rolling resistance and are staggered to provide a consistent feel across the profile of the tire. The side knobs are fairly aggressive and provide excellent cornering grip. The Patrol is available with a wire bead or folding bead with Defender Cobweb puncture protection.

| ITEM       | INCH      | ETRTO  | FRENCH SIZE | TPI | BEAD     | WEIGHT (g) | COMPOUND | MAX PSI | TECH                         | COLOUR |
|------------|-----------|--------|-------------|-----|----------|------------|----------|---------|------------------------------|--------|
| TB00192500 | 20X3.0    | 76-406 |             | 60  | Wire     | 850        | Single   | 30      |                              | Black  |
| TB69916100 | 26X2.10   | 54-559 |             | 27  | Wire     | 720        | Single   | 65      |                              | Black  |
| TB69916000 | 26X2.10   | 54-559 |             | 60  | Foldable | 620        | Dual     | 65      | Defender Cobweb              | Black  |
| TB72566100 | 26X2.25   | 57-559 |             | 27  | Wire     | 780        | Single   | 65      |                              | Black  |
| TB72566000 | 26X2.25   | 57-559 |             | 60  | Foldable | 715        | Dual     | 65      | Defender Cobweb              | Black  |
| TB00192600 | 26X3.0    | 76-559 |             | 60  | Wire     | 1160       | Single   | 30      |                              | Black  |
| TB90969000 | 27.5X2.10 | 52-584 |             | 60  | Foldable | 620        | Dual     | 65      | Defender Cobweb /TLR         | Black  |
| TB90985000 | 27.5x2.25 | 57-584 | 650X57B     | 27  | Wire     | 805        | Single   | 65      |                              | Black  |
| TB90985200 | 27.5X2.25 | 57-584 | 650X57B     | 60  | Foldable | 735        | Dual     | 65      | Defender Cobweb /TLR         | Black  |
| TB91063000 | 27.5X2.40 | 61-584 |             | 27  | Wire     | 870        | Single   | 65      |                              | Black  |
| TB91063100 | 27.5X2.40 | 61-584 |             | 60  | Foldable | 755        | Dual     | 65      | Defender Cobweb              | Black  |
| TB96903100 | 27.5X2.80 | 71-584 |             | 27  | Wire     | 960        | Dual     | 35      |                              | Black  |
| TB96903200 | 27.5X2.80 | 71-584 |             | 60  | Wire     | 990        | Dual     | 35      |                              | Black  |
| TB96903000 | 27.5X2.80 | 71-584 |             | 60  | Foldable | 800        | Dual     | 35      | Defender Cobweb              | Black  |
| TB96655100 | 29X2.10   | 54-622 |             | 27  | Wire     | 790        | Single   | 65      |                              | Black  |
| TB96655000 | 29X2.10   | 54-622 |             | 60  | Foldable | 670        | Dual     | 65      | Defender Cobweb              | Black  |
| TB96745000 | 29X2.10   | 54-622 |             | 60  | Foldable | 655        | Dual     | 65      | Defender Cobweb /TLR         | Black  |
| TB96812100 | 29X2.25   | 57-622 |             | 27  | Wire     | 820        | Single   | 65      |                              | Black  |
| TB96812000 | 29X2.25   | 57-622 |             | 60  | Foldable | 705        | Dual     | 65      | Defender Cobweb              | Black  |
| TB96733500 | 29X2.25   | 57-622 |             | 60  | Foldable | 735        | Dual     | 65      | Defender Cobweb /TLR         | Black  |
| TB96799000 | 29 X2.40  | 61-622 |             | 27  | Wire     | 915        | Single   | 65      |                              | Black  |
| TB96799100 | 29 X2.40  | 61-622 |             | 60  | Foldable | 805        | Dual     | 65      | Defender Cobweb              | Black  |
| TB00236200 | 29X2.60   | 66-622 |             | 60  | Foldable | 1085       | Dual     | 45      | Defender Cobweb / 1PCI / TLR | Black  |
| TB00324300 | 29X2.60   | 66-622 |             | 60  | Wire     | 1130       | Dual     | 45      | Defender Allround            | Black  |
| TB00236300 | 29X2.80   | 71-622 |             | 60  | Foldable | 1120       | Dual     | 35      | Defender Cobweb / 1PCI / TLR | Black  |

# JACK RABBIT C1747

The Jack Rabbit from CST is a UST-certified mountain bike tire, meaning it can be run tubeless on an approved UST wheel. To keep you burning up the trail, the Jack Rabbit features a fast-rolling tread design with small ramped knobs. When the trail gets technical, our Defender Cobweb puncture protection will give you the confidence to concentrate on your line. The same great tread pattern and puncture protection is also available in a tube-type version for riders not using UST-certified wheels.



| ITEM       | INCH      | ETRTO  | FRENCH SIZE | TPI | BEAD     | WEIGHT (g) | COMPOUND | MAX PSI | TECH                 | COLOUR |
|------------|-----------|--------|-------------|-----|----------|------------|----------|---------|----------------------|--------|
| TB67595700 | 26X1.95   | 50-559 |             | 27  | Wire     | 640        | Single   | 65      |                      | Black  |
| TB67595500 | 26X1.95   | 50-559 |             | 60  | Foldable | 580        | Dual     | 65      | Defender Cobweb      | Black  |
| TB68613100 | 26X2.00   | 54-559 |             | 120 | Foldable | 820        | Single   | 65      | Defender Cobweb /UST | Black  |
| TB70394700 | 26X2.10   | 54-559 |             | 27  | Wire     | 665        | Single   | 65      |                      | Black  |
| TB70394800 | 26X2.10   | 54-559 |             | 60  | Foldable | 615        | Dual     | 65      | Defender Cobweb      | Black  |
| TB00081400 | 27.5X1.95 | 50-584 |             | 27  | Wire     | 760        | Dual     | 65      |                      | Black  |
| TB90952000 | 27.5X2.10 | 52-584 |             | 27  | Wire     | 690        | Single   | 65      |                      | Black  |
| TB90965000 | 27.5X2.10 | 52-584 |             | 60  | Foldable | 605        | Dual     | 65      | Defender Cobweb/ TLR | Black  |
| TB90984000 | 27.5X2.25 | 57-584 |             | 27  | Wire     | 760        | Single   | 65      |                      | Black  |
| TB90984100 | 27.5X2.25 | 57-584 |             | 60  | Foldable | 645        | Dual     | 65      | Defender Cobweb      | Black  |
| TB91033000 | 27.5X2.25 | 57-584 |             | 60  | Foldable | 680        | Dual     | 65      | Defender Cobweb/ TLR | Black  |
| TB00191600 | 27.5X2.40 | 61-584 |             | 60  | Foldable | 690        | Dual     | 65      | Defender Cobweb      | Black  |
| TB00264600 | 27.5X2.60 | 66-584 |             | 60  | Wire     | 955        | Dual     | 45      | Defender Allround    | Black  |
| TB00264700 | 27.5X2.80 | 71-584 |             | 60  | Wire     | 990        | Dual     | 35      | Defender Allround    | Black  |
| TB96656000 | 29X2.10   | 52-622 |             | 27  | Wire     | 750        | Single   | 65      |                      | Black  |
| TB96661000 | 29X2.10   | 52-622 |             | 60  | Foldable | 635        | Dual     | 65      | Defender Cobweb/ TLR | Black  |
| TB96801000 | 29X2.25   | 57-622 |             | 27  | Wire     | 800        | Single   | 65      |                      | Black  |
| TB96801100 | 29X2.25   | 57-622 |             | 60  | Foldable | 680        | Dual     | 65      | Defender Cobweb      | Black  |
| TB96841000 | 29X2.25   | 57-622 |             | 60  | Foldable | 715        | Dual     | 65      | Defender Cobweb/ TLR | Black  |
| TB00191700 | 29X2.40   | 61-622 |             | 60  | Foldable | 730        | Dual     | 65      | Defender Cobweb      | Black  |
| TB00236600 | 29X2.60   | 66-622 |             | 60  | Foldable | 965        | Dual     | 45      | Defender Cobweb/1PCI | Black  |
| TB00236700 | 29X2.80   | 71-622 |             | 60  | Foldable | 1000       | Dual     | 35      | Defender Cobweb/1PCI | Black  |



## JACK RABBIT II C1747N

An update from the current Jack Rabbit. The goal was to make an already great tire, even better. A special 'over-lay' bridge has been added to the pattern to ensure fantastic control and adds unparalleled grip and speed. This combination makes the Jack Rabbit II a true high performer.



| ITEM       | INCH    | ETRTO  | FRENCH SIZE | TPI | BEAD     | WEIGHT (g) | COMPOUND | MAX PSI | TECH                 | COLOUR      |
|------------|---------|--------|-------------|-----|----------|------------|----------|---------|----------------------|-------------|
| TB00141700 | 29X2.25 | 57-622 |             | 120 | Foldable | 575        | 3C       | 65      | Defender Cobweb      | Black       |
| TB00141600 | 29X2.25 | 57-622 |             | 120 | Foldable | 490        | 3C       | 65      |                      | Black       |
| TB00281500 | 29X2.25 | 57-622 |             | 60  | Foldable | 725        | Dual     | 65      | Defender Cobweb /TLR | Coffee wall |
| TB00447600 | 29X2.35 | 60-622 |             | 120 | Foldable | 650        | 3C       | 65      | Defender Cobweb      | Black       |
| TB00447700 | 29X2.35 | 60-622 |             | 170 | Foldable | 660        | 3C       | 65      | Defender Cobweb      | Black       |
| TB00492700 | 29X2.35 | 60-622 |             | 60  | Foldable | 835        | Single   | 65      | TLR                  | Brown SW    |
| TB00492800 | 29X2.35 | 60-622 |             | 120 | Foldable | 690        | 3C       | 65      | TLR                  | Black       |

## STUDMUFFIN MTB C1908

The Studmuffin mountain tire is a studded 26X2.10 tire with open spacing for clearing snow. Each knob has a stud hole for a total of 210 studs. CST's Studmuffin is an aggressive tire that performs well in traction.



| ITEM       | INCH    | ETRTO  | FRENCH SIZE | TPI | BEAD | WEIGHT (g) | COMPOUND | MAX PSI | TECH                  | COLOUR |
|------------|---------|--------|-------------|-----|------|------------|----------|---------|-----------------------|--------|
| TB69717000 | 26X2.10 | 54-559 |             | 27  | Wire | 1050       | Single   | 65      | Defender Cobweb /Stud | Black  |

## BFT C1752

The CST BFT (Big Fat Tire) features meaty centre and side knobs combined with a high-volume casing to create the ultimate aggressive all-mountain/freeride tire. The BFT offers predictable cornering and excellent braking traction – just what you need when the trail gets dicey. The BFT is available with a wire or folding bead with Defender Cobweb puncture protection, perfect for longer travel bicycles.



| ITEM       | INCH      | ETRTO   | FRENCH SIZE | TPI | BEAD     | WEIGHT (g) | COMPOUND | MAX PSI | TECH                 | COLOUR |
|------------|-----------|---------|-------------|-----|----------|------------|----------|---------|----------------------|--------|
| TB00320200 | 20X2.40   | 61-406  |             | 27  | Wire     | 605        | Dual     | 65      |                      | Black  |
| TB35938000 | 20X4.0    | 100-406 |             | 60  | Wire     | 1045       | Single   | 65      |                      | Black  |
| TB00008800 | 24X2.40   | 61-507  |             | 27  | Wire     | 725        | Dual     | 65      |                      | Black  |
| TB00320300 | 24X4.0    | 100-507 |             | 60  | Wire     | 1125       | Single   | 30      |                      | Black  |
| TB72612100 | 26X2.25   | 54-559  |             | 27  | Wire     | 905        | Single   | 65      |                      | Black  |
| TB72612000 | 26X2.25   | 54-559  |             | 60  | Foldable | 865        | Dual     | 65      | Defender Cobweb      | Black  |
| TB74202100 | 26X2.40   | 60-559  |             | 27  | Wire     | 1060       | Single   | 65      |                      | Black  |
| TB74202000 | 26X2.40   | 60-559  |             | 60  | Foldable | 910        | Dual     | 65      | Defender Cobweb      | Black  |
| TB72652000 | 26 X4.0   | 100-559 |             | 60  | Wire     | 1280       | Single   | 65      |                      | Black  |
| TB90999000 | 27.5x2.25 | 54-584  | 650x57B     | 27  | Wire     | 1140       | Single   | 65      |                      | Black  |
| TB90999100 | 27.5x2.25 | 54-584  | 650x57B     | 60  | Foldable | 830        | Dual     | 65      | Defender Cobweb      | Black  |
| TB91031000 | 27.5X2.25 | 57-584  |             | 60  | Foldable | 865        | Dual     | 65      | Defender Cobweb /TLR | Black  |
| TB91061000 | 27.5X2.40 | 61-584  |             | 27  | Wire     | 1150       | Single   | 65      |                      | Black  |
| TB91061100 | 27.5X2.40 | 61-584  |             | 60  | Foldable | 980        | Dual     | 65      | Defender Cobweb      | Black  |
| TB85964000 | 27.5X2.40 | 61-584  |             | 60  | Foldable | 885        | Dual     | 65      | Defender Cobweb /TLR | Black  |
| TB00264400 | 27.5X2.60 | 66-584  |             | 60  | Wire     | 1200       | Dual     | 45      | Defender Allround    | Black  |
| TB00264500 | 27.5X2.80 | 71-584  |             | 60  | Wire     | 1225       | Dual     | 35      | Defender Allround    | Black  |
| TB91152000 | 27.5 X3.0 | 76-584  |             | 60  | Wire     | 1145       | Single   | 65      |                      | Black  |
| TB96843000 | 29X2.25   | 57-622  |             | 60  | Foldable | 905        | Dual     | 65      | Defender Cobweb /TLR | Black  |
| TB96835000 | 29 X3.0   | 76-622  |             | 60  | Wire     | 1200       | Dual     | 65      |                      | Black  |





ALSO AVAILABLE  
WITH DEFENDER  
COBWEB

TR  
TUBELESS READY  
TECHNOLOGY

PROTECTION  
LEVEL 3

## ROCK HAWK C1844

The Rock Hawk from CST features an aggressive tread pattern with large, well-spaced lugs. This spacing allows the tire to shed mud and other debris on mountain bike trails with varying conditions. In order to help reduce rolling resistance, the center knobs have been ramped. The Rock Hawk is available with a wire bead or folding bead with Defender Cobweb puncture protection.

| ITEM       | INCH      | ETRTO  | FRENCH<br>SIZE | TPI | BEAD     | WEIGHT<br>(g) | COMPOUND | MAX<br>PSI | TECH                    | COLOUR |
|------------|-----------|--------|----------------|-----|----------|---------------|----------|------------|-------------------------|--------|
| TB72639100 | 26X2.25   | 57-559 |                | 27  | Wire     | 975           | Single   | 65         |                         | Black  |
| TB72639000 | 26X2.25   | 57-559 |                | 60  | Foldable | 855           | Dual     | 65         | Defender<br>Cobweb      | Black  |
| TB74175200 | 26X2.40   | 60-559 |                | 27  | Wire     | 1060          | Single   | 65         |                         | Black  |
| TB74175100 | 26X2.40   | 60-559 |                | 60  | Foldable | 930           | Dual     | 65         | Defender<br>Cobweb      | Black  |
| TB91039000 | 27.5X2.25 | 54-584 |                | 60  | Foldable | 885           | Dual     | 65         | Defender<br>Cobweb /TLR | Black  |
| TB90986100 | 27.5X2.25 | 57-584 |                | 27  | Wire     | 1010          | Single   | 65         |                         | Black  |
| TB90986000 | 27.5X2.25 | 57-584 |                | 60  | Foldable | 910           | Dual     | 65         | Defender<br>Cobweb      | Black  |
| TB91055100 | 27.5X2.40 | 60-584 |                | 27  | Wire     | 1070          | Single   | 65         |                         | Black  |
| TB91055000 | 27.5X2.40 | 60-584 |                | 60  | Foldable | 970           | Dual     | 65         | Defender<br>Cobweb      | Black  |
| TB91058000 | 27.5X2.40 | 61-584 |                | 60  | Foldable | 905           | Dual     | 65         | Defender<br>Cobweb/TLR  | Black  |
| TB96810100 | 29X2.25   | 57-622 |                | 27  | Wire     | 1055          | Single   | 65         |                         | Black  |
| TB96810000 | 29X2.25   | 57-622 |                | 60  | Foldable | 945           | Dual     | 65         | Defender<br>Cobweb      | Black  |
| TB96842000 | 29X2.25   | 57-622 |                | 60  | Foldable | 920           | Dual     | 65         | Defender<br>Cobweb/TLR  | Black  |
| TB96796100 | 29X2.40   | 60-622 |                | 27  | Wire     | 1160          | Single   | 65         |                         | Black  |
| TB96796000 | 29X2.40   | 60-622 |                | 60  | Foldable | 1020          | Dual     | 65         | Defender<br>Cobweb      | Black  |
| TB96860000 | 29X2.40   | 61-622 |                | 60  | Foldable | 955           | Dual     | 65         | Defender<br>Cobweb /TLR | Black  |

CST®



PROTECTION  
LEVEL 3

## TRAIL FIEND C1965

The Trail Fiend is designed for the demands of the cross country racing community. The knobs are closely spaced and ramped for fast rolling and straight line braking performance. The shoulder and transition knobs are mildly aggressive to provide traction without sacrificing efficiency.

| ITEM       | INCH      | ETRTO  | FRENCH<br>SIZE | TPI | BEAD     | WEIGHT<br>(g) | COMPOUND | MAX<br>PSI | TECH            | COLOUR |
|------------|-----------|--------|----------------|-----|----------|---------------|----------|------------|-----------------|--------|
| TB90951100 | 27.5X2.10 | 54-584 |                | 27  | Wire     | 700           | Single   | 65         |                 | Black  |
| TB90951000 | 27.5X2.10 | 54-584 |                | 60  | Foldable | 590           | Dual     | 65         | Defender Cobweb | Black  |
| TB91046100 | 27.5X2.25 | 57-584 |                | 27  | Wire     | 745           | Single   | 65         |                 | Black  |
| TB91046000 | 27.5X2.25 | 57-584 |                | 60  | Foldable | 635           | Dual     | 65         | Defender Cobweb | Black  |
| TB96762100 | 29X2.10   | 54-622 |                | 27  | Wire     | 735           | Single   | 65         |                 | Black  |
| TB96762000 | 29X2.10   | 54-622 |                | 60  | Foldable | 620           | Dual     | 65         | Defender Cobweb | Black  |
| TB96897000 | 29X2.25   | 57-622 |                | 27  | Wire     | 780           | Single   | 65         |                 | Black  |
| TB96891000 | 29X2.25   | 57-622 |                | 60  | Foldable | 670           | Dual     | 65         | Defender Cobweb | Black  |

## VOYAGER C1956

Voyager is a semi-slick MTB tire to be used in hardpacked conditions, offered in 27.5x2.25 and 29x2.25. The Voyager delivers excellent cornering performance, rolling resistance, and comfort.



PROTECTION  
LEVEL 3

| ITEM       | INCH      | ETRTO  | FRENCH<br>SIZE | TPI | BEAD     | WEIGHT<br>(g) | COMPOUND | MAX<br>PSI | TECH            | COLOUR |
|------------|-----------|--------|----------------|-----|----------|---------------|----------|------------|-----------------|--------|
| TB91043000 | 27.5X2.25 | 57-584 |                | 27  | Wire     | 715           | Dual     | 65         |                 | Black  |
| TB91043100 | 27.5X2.25 | 57-584 |                | 60  | Foldable | 605           | Dual     | 65         | Defender Cobweb | Black  |
| TB96893000 | 29X2.25   | 57-622 |                | 27  | Wire     | 755           | Dual     | 65         |                 | Black  |
| TB96893100 | 29X2.25   | 57-622 |                | 60  | Foldable | 640           | Dual     | 65         | Defender Cobweb | Black  |



# ROLY POLY C1936

Bigger, better and more brutal: Fly over loose terrain and snow with CST's first fat tire The Roly Poly's centre knobs are designed to deliver low rolling resistance, while the large side knobs make cornering a breeze. Available in 26x4.8, the largest available size on the market, with a 60 TPI casing.



| ITEM       | INCH     | ETRTO   | FRENCH SIZE | TPI | BEAD     | WEIGHT (g) | COMPOUND | MAX PSI | TECH | COLOUR |
|------------|----------|---------|-------------|-----|----------|------------|----------|---------|------|--------|
| TB72666000 | 26 X4.80 | 122-559 |             | 60  | Wire     | 1780       | Single   |         |      | Black  |
| TB72666100 | 26 X4.80 | 122-559 |             | 120 | Foldable | 1420       | Single   |         |      | Black  |

# SERRATUS C1955

Serratus is a road-friendly MTB tire, designed with excellent tread depth, open shoulders, and close centre knob spacing to reduce road rolling resistance. The Serratus is ideal for riders who want a durable tire that performs well off-road as well as on paved surfaces.



| ITEM       | INCH      | ETRTO  | FRENCH SIZE | TPI | BEAD | WEIGHT (g) | COMPOUND | MAX PSI | TECH            | COLOUR |
|------------|-----------|--------|-------------|-----|------|------------|----------|---------|-----------------|--------|
| TB00186500 | 26X1.95   | 50-559 |             | 60  | Wire | 635        | Dual     | 65      | Defender Cobweb | Black  |
| TB70141000 | 26X2.10   | 54-559 |             | 27  | Wire | 710        | Dual     | 65      |                 | Black  |
| TB00186600 | 27.5X1.95 | 50-584 |             | 60  | Wire | 665        | Dual     | 65      | Defender Cobweb | Black  |
| TB90961000 | 27.5X2.10 | 52-584 |             | 27  | Wire | 700        | Dual     | 65      |                 | Black  |
| TB96660500 | 29X2.10   | 54-622 |             | 27  | Wire | 690        | Dual     | 65      |                 | Black  |

# STAYER C1902

Stay confident in soft, muddy conditions with the CST Stayer. The CST Stayer is a lightweight tire that features an open tread design with sharp centre knobs for shedding mud and debris. Angled shoulder knobs help keep this tire hooked up in corners and give you the ability to ride in the harshest environments. The CST Stayer is available with a wire bead or folding bead with Defender Cobweb puncture protection.



| ITEM       | INCH    | ETRTO  | FRENCH SIZE | TPI | BEAD     | WEIGHT (g) | COMPOUND | MAX PSI | TECH            | COLOUR |
|------------|---------|--------|-------------|-----|----------|------------|----------|---------|-----------------|--------|
| TB96813000 | 29X2.25 | 57-622 |             | 27  | Wire     | 835        | Single   | 65      |                 | Black  |
| TB96813100 | 29X2.25 | 57-622 |             | 60  | Foldable | 700        | Dual     | 65      | Defender Cobweb | Black  |

# GRIPPER C1879

The CST Gripper is a well-rounded, versatile mountain bike tire suitable for use in a variety of conditions. The centre tread features ramped knobs that flow throughout the tire to help shed mud and debris while decreasing rolling resistance for a smooth, comfortable ride. The centre tread is perfectly paired with staggered shoulder knobs for exceptional turning capabilities. The CST Gripper is available with a wire or folding bead with Defender Cobweb puncture protection.



| ITEM       | INCH      | ETRTO  | FRENCH SIZE | TPI | BEAD     | WEIGHT (g) | COMPOUND | MAX PSI | TECH                 | COLOUR |
|------------|-----------|--------|-------------|-----|----------|------------|----------|---------|----------------------|--------|
| TB69919000 | 26x2.10   | 54-559 |             | 27  | Wire     | 800        | Single   | 65      |                      | Black  |
| TB69919400 | 26x2.10   | 54-559 |             | 60  | Foldable | 615        | Dual     | 65      | Defender Cobweb      | Black  |
| TB90962400 | 27.5X2.10 | 52-584 |             | 27  | Wire     | 780        | Single   | 65      |                      | Black  |
| TB90962700 | 27.5X2.10 | 52-584 |             | 60  | Foldable | 645        | Dual     | 65      | Defender Cobweb      | Black  |
| TB90989000 | 27.5X2.25 | 57-584 |             | 27  | Wire     | 810        | Single   | 65      |                      | Black  |
| TB90989400 | 27.5X2.25 | 57-584 |             | 60  | Foldable | 675        | Dual     | 65      | Defender Cobweb      | Black  |
| TB96664300 | 29X2.10   | 52-622 |             | 27  | Wire     | 820        | Single   | 65      |                      | Black  |
| TB96664200 | 29X2.10   | 52-622 |             | 30  | Wire     | 1275       | Single   | 65      | Defender Rebound 3mm | Black  |
| TB96806000 | 29X2.25   | 57-622 |             | 27  | Wire     | 820        | Single   | 65      |                      | Black  |
| TB96806300 | 29X2.25   | 57-622 |             | 60  | Foldable | 700        | Dual     | 65      | Defender Cobweb      | Black  |
| TB95986100 |           | 40-622 | 700X40C     | 27  | Wire     | 580        | Single   | 75      |                      | Black  |





## BEATER C1876

Beat your competition with the CST Beater! The CST Beater is a flexible XC-style tire with an innovative tread pattern engineered for performance and comfort. The centre tread features ramped and angled knobs that help keep the tire rolling fast on the trail and provide a consistent feel across the profile of the tire. The side knobs complement the centre tread with sharp, angled knobs for exceptional cornering grip. The CST Beater is available with a wire bead or folding bead with Defender Cobweb puncture protection.



| ITEM       | INCH      | ETRTO  | FRENCH SIZE | TPI | BEAD     | WEIGHT (g) | COMPOUND | MAX PSI | TECH            | COLOUR |
|------------|-----------|--------|-------------|-----|----------|------------|----------|---------|-----------------|--------|
| TB90968100 | 27.5X2.10 | 52-584 |             | 27  | Wire     | 680        | Single   | 65      |                 | Black  |
| TB90968400 | 27.5X2.10 | 52-584 |             | 60  | Foldable | 515        | Dual     | 65      | Defender Cobweb | Black  |
| TB90995000 | 27.5X2.25 | 57-584 |             | 27  | Wire     | 690        | Single   | 65      |                 | Black  |
| TB90995100 | 27.5X2.25 | 57-584 |             | 60  | Foldable | 615        | Dual     | 65      | Defender Cobweb | Black  |
| TB96666200 | 29X2.10   | 52-622 |             | 27  | Wire     | 715        | Single   | 65      |                 | Black  |
| TB96808000 | 29X2.25   | 57-622 |             | 27  | Wire     | 705        | Single   | 65      |                 | Black  |
| TB96808100 | 29X2.25   | 57-622 |             | 60  | Foldable | 620        | Dual     | 65      | Defender Cobweb | Black  |

## CRITTER C1600

Designed mainly for hardpack trails, the Critter from CST is a fast-rolling cross country mountain bike tire. Folding bead versions of the Critter use our Defender Cobweb puncture protection for added durability.



| ITEM       | INCH    | ETRTO  | FRENCH SIZE | TPI | BEAD     | WEIGHT (g) | COMPOUND | MAX PSI | TECH            | COLOUR |
|------------|---------|--------|-------------|-----|----------|------------|----------|---------|-----------------|--------|
| TB68142000 | 26X1.95 | 53-559 |             | 27  | Wire     | 665        | Single   | 65      |                 | Black  |
| TB68144000 | 26X1.95 | 53-559 |             | 60  | Foldable | 580        | Dual     | 65      | Defender Cobweb | Black  |
| TB69970000 | 26X2.10 | 56-559 |             | 27  | Wire     | 675        | Single   | 65      |                 | Black  |
| TB69972000 | 26X2.10 | 56-559 |             | 60  | Foldable | 620        | Dual     | 65      | Defender Cobweb | Black  |
| TB96700000 | 29X2.10 | 48-622 |             | 27  | Wire     | 830        | Single   | 65      |                 | Black  |
| TB96700800 | 29X2.10 | 48-622 |             | 60  | Foldable | 690        | Dual     | 65      | Defender Cobweb | Black  |



## CAMBER C1671

The CST Camber is a hardpack mountain bike tire designed to run in specific directions for the front and rear. In front, the Camber rolls fast, confidently grabbing corners even in the loose stuff. Reversed on the rear, the Camber gives you the same confidence in the corners, plus additional acceleration and climbing traction. The Camber is available with a wire bead, a folding bead with Defender Cobweb puncture protection and a UST-certified bead profile and casing.



| ITEM       | INCH    | ETRTO  | FRENCH SIZE | TPI | BEAD     | WEIGHT (g) | COMPOUND | MAX PSI | TECH                 | COLOUR |
|------------|---------|--------|-------------|-----|----------|------------|----------|---------|----------------------|--------|
| TB69953000 | 26X2.10 | 56-559 |             | 27  | Wire     | 645        | Single   | 65      |                      | Black  |
| TB69954000 | 26X2.10 | 56-559 |             | 60  | Foldable | 620        | Dual     | 65      | Defender Cobweb      | Black  |
| TB72628000 | 26X2.25 | 62-559 |             | 27  | Wire     | 695        | Single   | 65      |                      | Black  |
| TB72629000 | 26X2.25 | 62-559 |             | 60  | Foldable | 675        | Dual     | 65      | Defender Cobweb      | Black  |
| TB72629500 | 26X2.25 | 62-559 |             | 120 | Foldable | 560        | Single   | 65      | Defender Cobweb /TLR | Black  |
| TB96721000 | 29X2.25 | 56-622 |             | 27  | Wire     | 795        | Single   | 65      |                      | Black  |
| TB96721100 | 29X2.25 | 56-622 |             | 60  | Foldable | 665        | Dual     | 65      | Defender Cobweb      | Black  |
| TB91031000 | 26X2.25 | 57-559 |             | 60  | Foldable | 615        | Dual     | 65      | Defender Cobweb /TLR | Black  |
| TB72629600 | 26X2.25 | 57-559 |             | 120 | Foldable | 800        | Dual     | 65      | Defender Cobweb /TLR | Black  |
| TB96692500 | 29X2.10 | 54-622 |             | 60  | Foldable | 660        | Dual     | 65      | Defender Cobweb /TLR | Black  |
| TB96892000 | 29X2.25 | 57-622 |             | 60  | Foldable | 705        | Dual     | 65      | Defender Cobweb /TLR | Black  |





**CST**®

## BMX

Grip for tricks, trials and racing





# VAULT C1854

The Vault BMX tire from CST uses a tread pattern suitable for street, park and dirt riding. With a textured surface and slightly raised shoulder knobs, the Vault rolls fast without giving up traction. The Vault is available in two widths, 1.95 and 2.20, to suit any freestyle BMX rider's needs.

| ITEM       | INCH    | ETRTO  | FRENCH SIZE | TPI | BEAD | WEIGHT (g) | COMPOUND | MAX PSI | TECH | COLOUR |
|------------|---------|--------|-------------|-----|------|------------|----------|---------|------|--------|
| TB29484000 | 20X1.95 | 50-406 |             | 60  | Wire | 590        | Dual     | 100     |      | Black  |
| TB31003000 | 20X2.20 | 56-406 |             | 60  | Wire | 670        | Dual     | 100     |      | Black  |
| TB35950000 | 20X2.40 | 61-406 |             | 60  | Wire | 680        | Dual     | 100     |      | Black  |



# OPERATIVE C1902

The CST Operative is equally suited for the track, street or park. The smooth centre tread helps you carry speed, while the micro knobs on the shoulders offer just the right amount of cornering grip. The tread design continues around the sidewall of the tire to give you a little extra insurance when grinding ledges. An excellent choice for your freestyle BMX bicycle.

| ITEM       | INCH    | ETRTO  | FRENCH SIZE | TPI | BEAD | WEIGHT (g) | COMPOUND | MAX PSI | TECH | COLOUR |
|------------|---------|--------|-------------|-----|------|------------|----------|---------|------|--------|
| TB00205300 | 12X2.25 | 54-203 |             | 60  | Wire | 285        | Dual     | 65      |      | Black  |
| TB24696000 | 20X1.75 | 43-406 |             | 60  | Wire | 435        | Dual     | 65      |      | Black  |
| TB35813000 | 20X2.25 | 54-406 |             | 60  | Wire | 535        | Dual     | 65      |      | Black  |
| TB35946000 | 20X2.40 | 61-406 |             | 60  | Wire | 610        | Dual     | 100     |      | Black  |





# DECADE C1853

Named for the “old school” trick, the CST Decade was designed with flatland BMX riding in mind. The Decade features a smooth profile, with no knobs to interfere with your feet while performing tricks. The surface of the tire is textured to help grip the soles of your shoes. The Decade is available in 1.75 and 2.00 inch widths.

| ITEM       | INCH    | ETRTO  | FRENCH SIZE | TPI | BEAD | WEIGHT (g) | COMPOUND | MAX PSI | TECH | COLOUR |
|------------|---------|--------|-------------|-----|------|------------|----------|---------|------|--------|
| TB24698000 | 20X1.75 | 43-406 |             | 60  | Wire | 545        | Dual     | 100     |      | Black  |
| TB29764000 | 20X2.00 | 50-406 |             | 60  | Wire | 605        | Dual     | 100     |      | Black  |



# TRACER C1751

The CST Tracer is a BMX workhorse! Designed with medium-sized, squared-off knobs for traction in loose dirt and stability in hardpack conditions, the Tracer is for the rider who uses one bicycle tire for all conditions.

| ITEM       | INCH     | ETRTO  | FRENCH SIZE | TPI | BEAD | WEIGHT (g) | COMPOUND | MAX PSI | TECH | COLOUR |
|------------|----------|--------|-------------|-----|------|------------|----------|---------|------|--------|
| TB29485000 | 20X1.95  | 54-406 |             | 60  | Wire | 460        | Single   | 65      |      | Black  |
| TB31402000 | 20X2.125 | 57-406 |             | 60  | Wire | 465        | Single   | 65      |      | Black  |
| TB49145000 | 24X1.95  | 47-507 |             | 60  | Wire | 570        | Single   | 65      |      | Black  |





# INNER TUBES

## SUPERLIGHT

- CST's lightweight competition bicycle tube
- 0.73mm wall thickness
- All of the Presta Valves listed below are available in 48mm, 60mm, 80mm and 100mm valve lengths

| Item number | Inch size     | Valve    | Weight (g) |
|-------------|---------------|----------|------------|
| IB24065200  | 20X1.50/1.75  | Schrader | 108        |
| IB24065300  | 20X1.50/1.75  | Presta   | 106        |
| IB29402400  | 20X1.75/2.125 | Schrader | 127        |
| IB29402500  | 20X1.75/2.125 | Presta   | 125        |
| IB62813600  | 26X1.75/2.125 | Schrader | 148        |
| IB62813700  | 26X1.75/2.125 | Presta   | 146        |
| IB51475100  | 650X18/25     | Schrader | 87         |
| IB51475200  | 650X18/25     | Presta   | 85         |
| IB69834400  | 700X18/25C    | Schrader | 86         |
| IB69834500  | 700X18/25C    | Presta   | 84         |



## DOWNHILL

- CST's heavy-duty bicycle tube for freeride and downhill use
- 1.20mm wall thickness

| Item number | Inch size  | Valve    | Weight (g) |
|-------------|------------|----------|------------|
| IB69128100  | 26X2.2/2.5 | Schrader | 274        |
| IB69128200  | 26X2.2/2.5 | Presta   | 272        |
| IB68570500  | 26X2.4/2.7 | Schrader | 399        |
| IB68570600  | 26X2.4/2.7 | Presta   | 397        |



## SELF-SEALING

- CST's dependable self-sealing bicycle tube will seal a puncture up to 1/8" in diameter – so leave your worries behind
- Great for kids' bikes
- 0.97mm wall thickness

| Item number | Inch size     | Valve    | Weight (g) |
|-------------|---------------|----------|------------|
| IB13900600  | 16X1.75/2.125 | Schrader | 213        |
| IB29400300  | 20X1.75/2.125 | Schrader | 277        |
| IB48442400  | 24X1.75/2.125 | Schrader | 311        |
| IB62811100  | 26X1.75/2.125 | Schrader | 327        |
| IB62811200  | 26X1.75/2.125 | Presta   | 325        |



## THORN RESISTANT

- CST's Thorn Resistant bicycle tube keeps out even the worst thorns and sharp debris
- Great for commuters
- 3.6mm wall thickness

| Item number | Inch size                 | Valve    | Weight (g) |
|-------------|---------------------------|----------|------------|
| IB13900300  | 16X1.75/2.125             | Schrader | 290        |
| IB29401900  | 20X1.75/2.125             | Schrader | 387        |
| IB48705000  | 24X1.75/2.125             | Schrader | 476        |
| IB62811400  | 26X1.75/2.125             | Schrader | 505        |
| IB74203000  | 700X25/32, 27X1 1/8-1 1/4 | Schrader | 280        |
| IB93968000  | 700X35/43, 27X1 3/8-1 3/4 | Schrader | 377        |



## ULTRA LIGHT

With a mere 0.6mm wall thickness, these tubes offer superior thinness, resulting in exceptional rolling resistance reduction. Perfect for road race and mountainbike enthusiasts, these tubes cater to various wheel sizes, including 26", 27.5", 29", and 700c. Experience the freedom of lightweight construction without compromising durability. Our ultralight tubes provide the perfect balance of weight savings and reliability. Upgrade to excellence in design and performance with our ultralight inner tubes.

| Item number | Inch size       | Valve  | Weight (g) |
|-------------|-----------------|--------|------------|
| IB00096000  | 27.5X1.90/2.125 | Presta | 143        |
| IB00098600  | 29X1.90/2.35    | Presta | 151        |
| IB00095600  | 700X18/25C      | Presta | 70         |







## BICYCLE TIRES GLOBAL

**Cheng Shin Rubber (Xiamen) Ind., Ltd**

No. 15 Xi Bin Road — Xing Lin Industrial District — Xiamen China 361022

T. + 86 592 6211606/6211346

F. + 86 592 6214649/6210420

[www.csttires.com](http://www.csttires.com)

**Cheng Shin Rubber (USA) Inc.**

545 Old Peachtree Road Suwanee, GA 30024, USA

T. 1-800-245-4118

F. 1-770-962-7705

[www.csttires.com](http://www.csttires.com)

